

matki

NEW ILLUSION QUINTESSA

IQT900/1000/1080/1280/1290/1490 LH/RH

INSTALLATION

PARTS LIST



MATKI PLC, CHURCHWARD ROAD, YATE, BRISTOL, BS37 5PL
TELEPHONE: 01454 322888 (CUSTOMER SERVICES). EMAIL: techsupport@matki.co.uk

IMPORTANT

Before disposing of carton and/or commencing assembly, please check all the parts to ascertain none are missing and they are all undamaged. No claim for missing/damaged parts will be accepted once the packing carton has been disposed of and/or assembly has commenced.

In case of query contact your Stockist with details of model number and details of serial number.

Due to the weight of the surround we recommend that two people are available for assembly.

PREPARATION

Please read complete installation instructions before fitting.

Ensure Shower Tray is level and a successful drainage test has been completed before Tray is tiled in (see separate Tray installation instructions supplied with the Shower Tray). Tray should be let into wall with the tiling upstand face, flush with the wall to allow tiling to overlap tiling upstand. **The assembly should be installed onto water resistant wall covering and installed after the Shower Tray and desired wall coverings are in place.**

Carefully remove assembly from carton, do not place glass on hard floor or expose edges to impact.

Ensure Shower Tray is level. Silicone Seal between tray and tiles. Remove any excess sealant from the area/joint between the tray and tiles where the Wall Mount will be fitted - this will ensure the Wall Mount fits correctly to the wall and tray.

CAUTION: TEMPERED GLASS CANNOT BE CUT, POLISHED METAL AND CHROME CAN BE SCRATCHED.

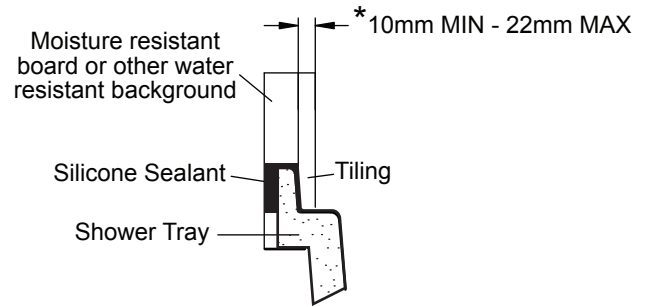
IMPORTANT

ALWAYS ENSURE WALLS ARE VERTICALLY PLUMB & SHOWER TRAY IS LEVEL!

TOOLS REQUIRED

6mm Masonry Drill Bit, Screw Drivers, Safety Glasses, Pliers/Snips, Electric Drill, Spirit Level, Pencil.

TYPICAL INSTALLATION OF SHOWER TRAY OVERVIEW



Alternatively, bottom of wall may be cut back to allow tiling lip to be flush with wall.

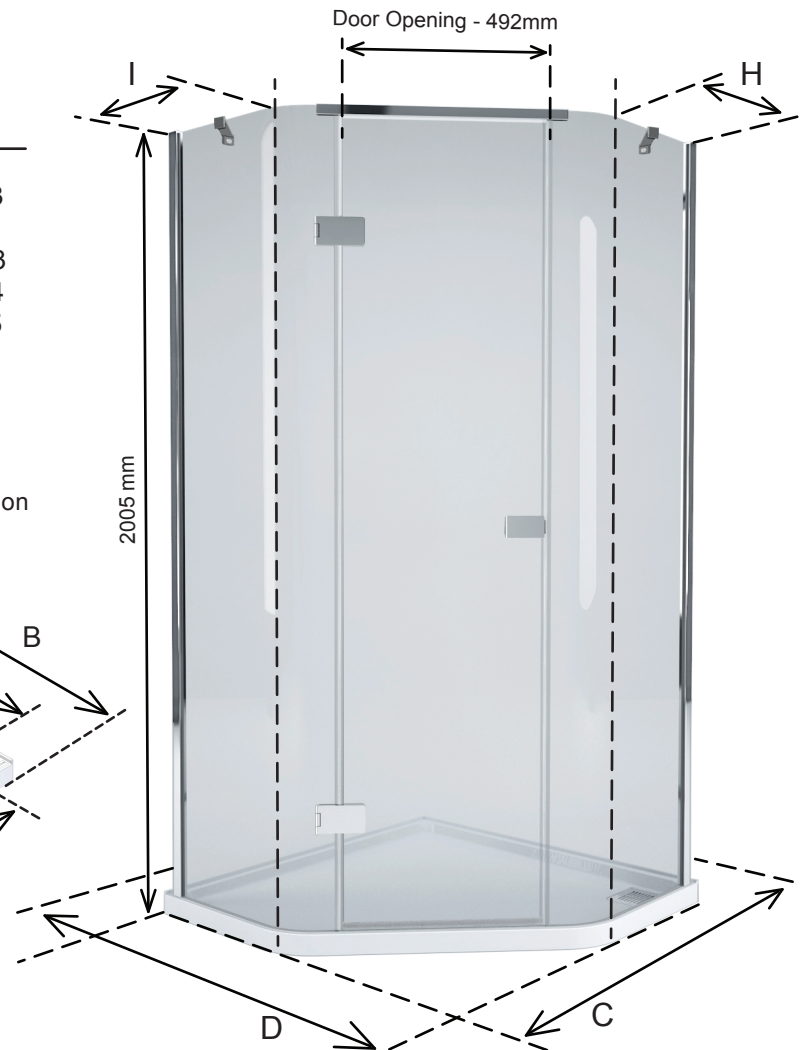
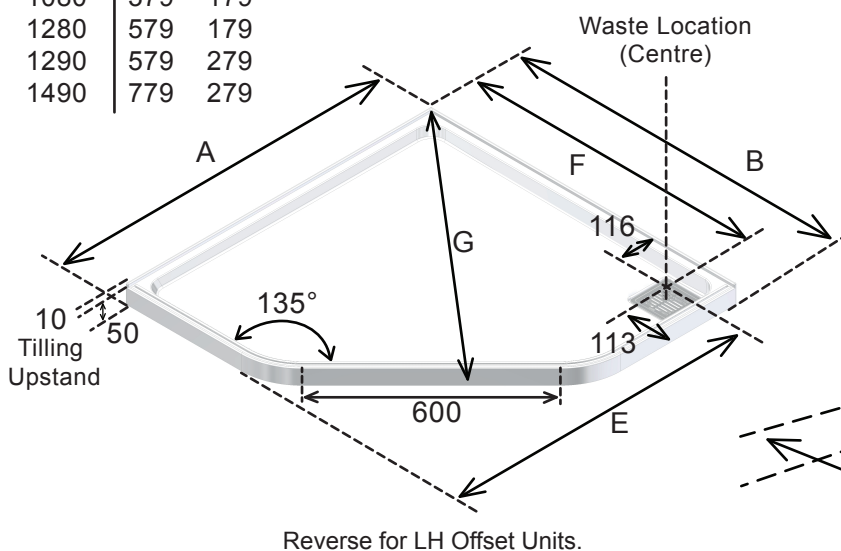
Ensure top of Shower Tray is level

*See TRAY FITTING & TILING PAGE

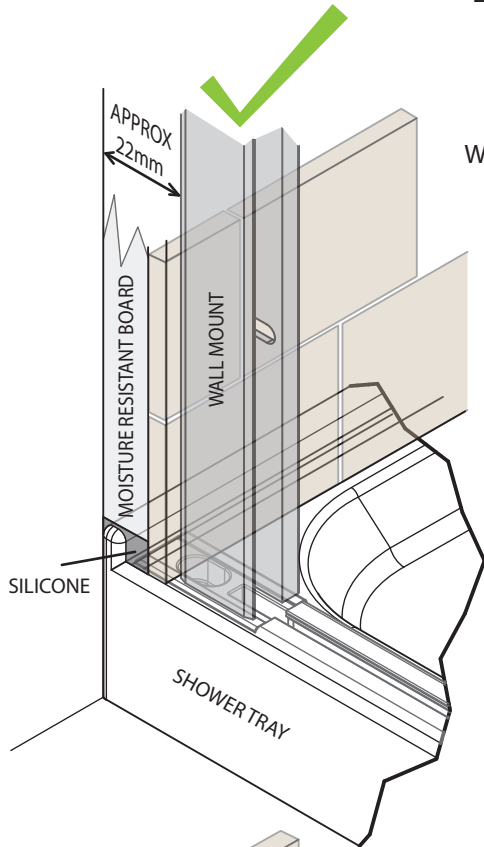
DIMENSIONS

Model	A	B	C	D	E	F	G
900	900	900	870-885	870-885	784	787	892
1000	1000	1000	970-985	970-985	884	887	1033
1080	1000	800	970-985	770-785	884	687	892
1280	1200	800	1170-1185	770-785	1084	687	1033
1290	1200	900	1170-1185	870-885	1084	787	1104
1490	1400	900	1370-1385	870-885	1284	787	1245

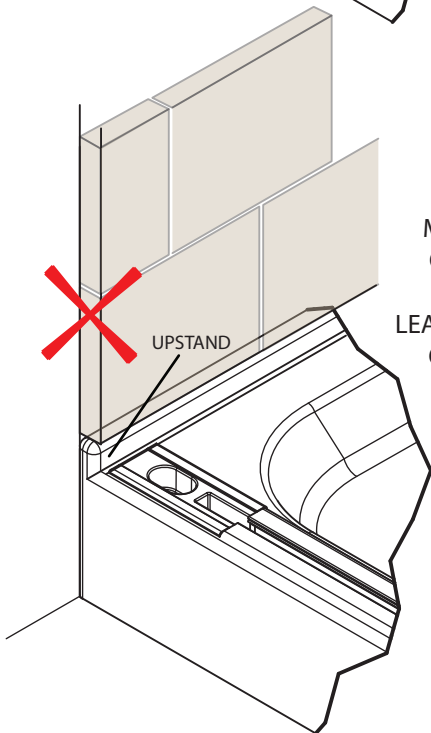
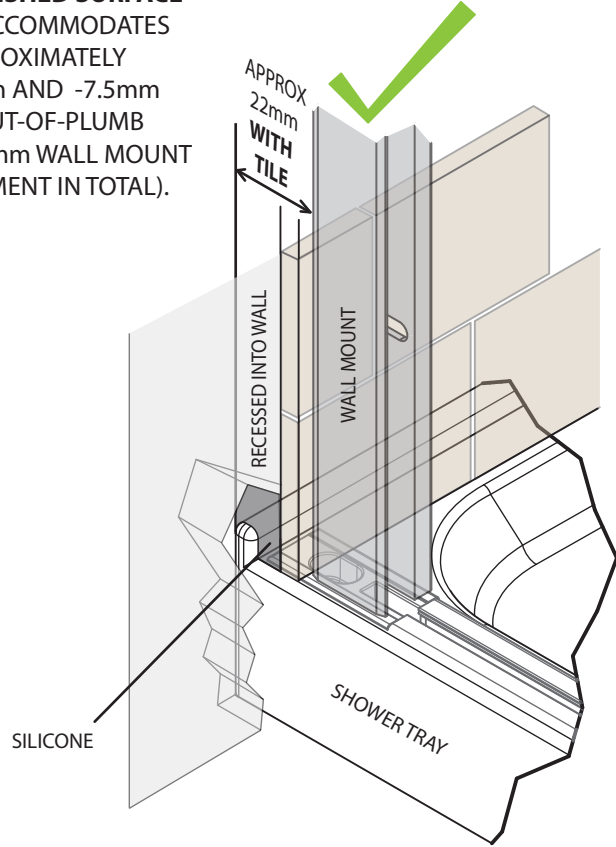
Model	H	I
900	279	279
1000	379	379
1080	379	179
1280	579	179
1290	579	279
1490	779	279



All Dimensions are in mm's. Dimensions quoted are approximate due to nature of materials used.



22mm **FINISHED SURFACE**
DEPTH ACCOMMODATES
APPROXIMATELY
+7.5mm AND -7.5mm
FOR OUT-OF-PLUMB
WALLS (15mm WALL MOUNT
ADJUSTMENT IN TOTAL).



MINIMAL TILE BUILD-UP ON
OR IN FRONT OF UPSTAND
(10mm OR BELOW)
LEAVES NO COMPENSATION FOR
OUT-OF-PLUMB WALLS ON
MAXIMUM WALL MOUNT
ADJUSTMENT.





CORNER - LH HINGE



CORNER - RH HINGE



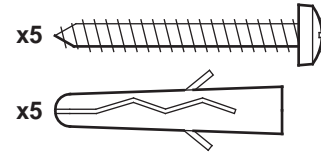
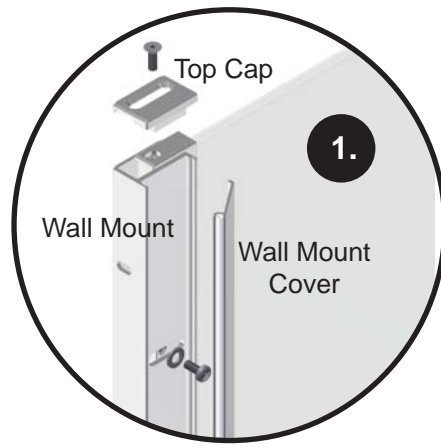
OFFSET - LH CORNER



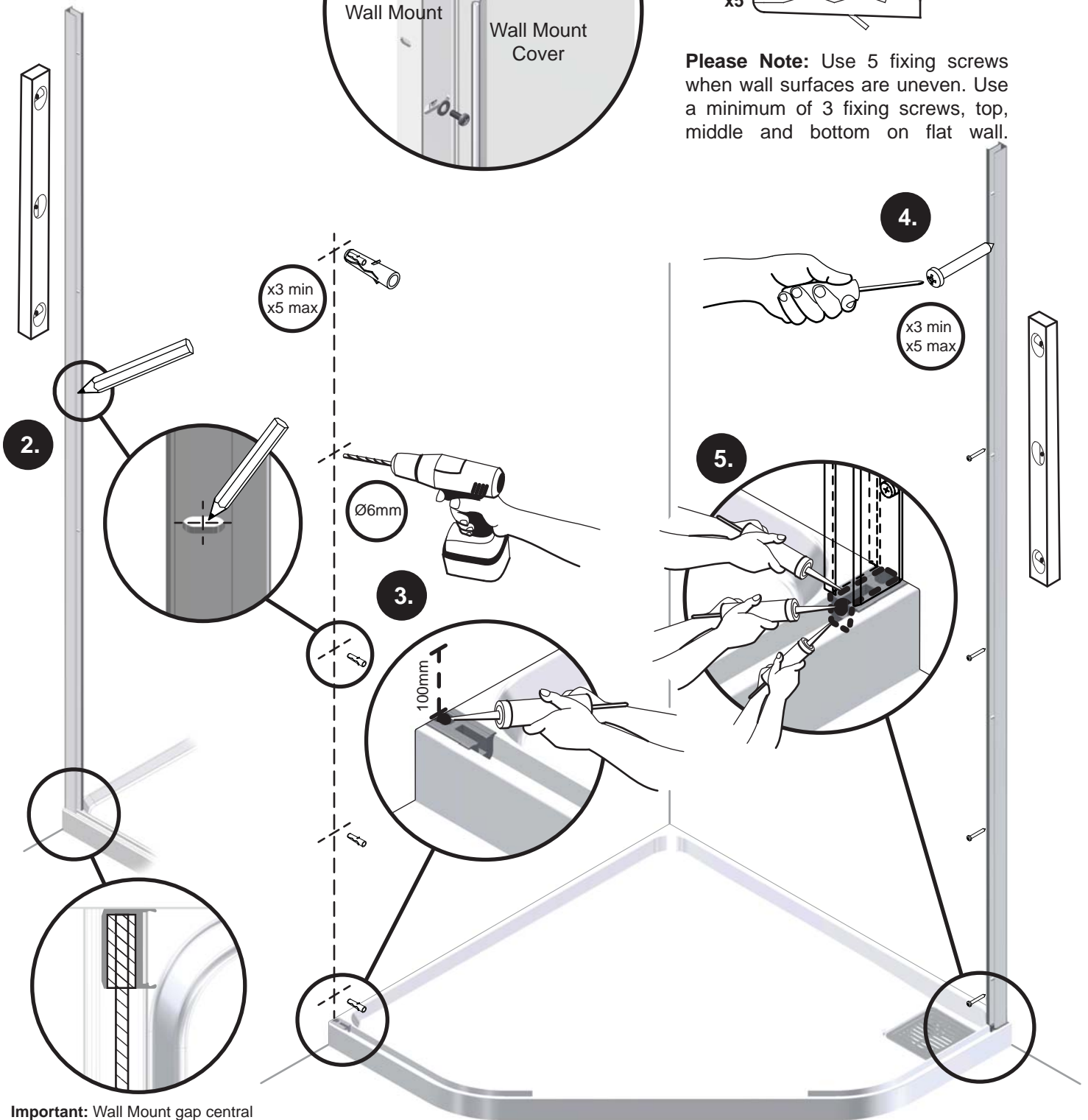
OFFSET - RH CORNER

THE STAGES IN THIS INSTALLATION BOOKLET SHOW A LH HINGED DOOR INSTALLATION, REVERSE FOR RH.

STAGE 1



Please Note: Use 5 fixing screws when wall surfaces are uneven. Use a minimum of 3 fixing screws, top, middle and bottom on flat wall.



Important: Wall Mount gap central to Tray Seal gap.
Glass Panel fits here.

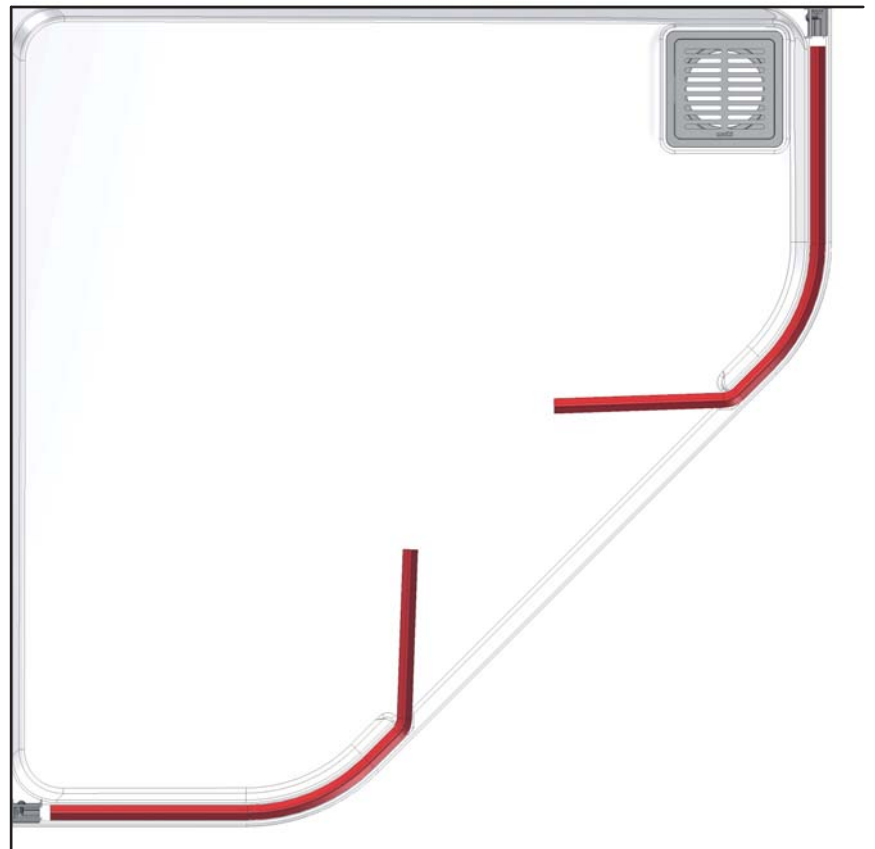
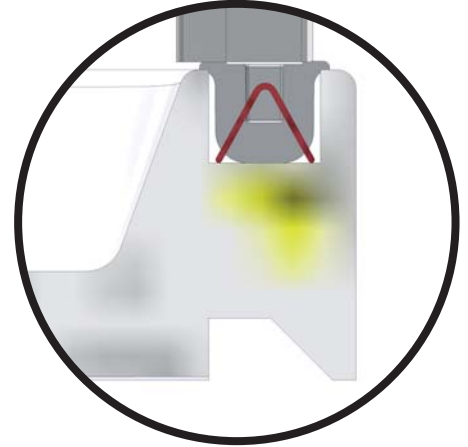
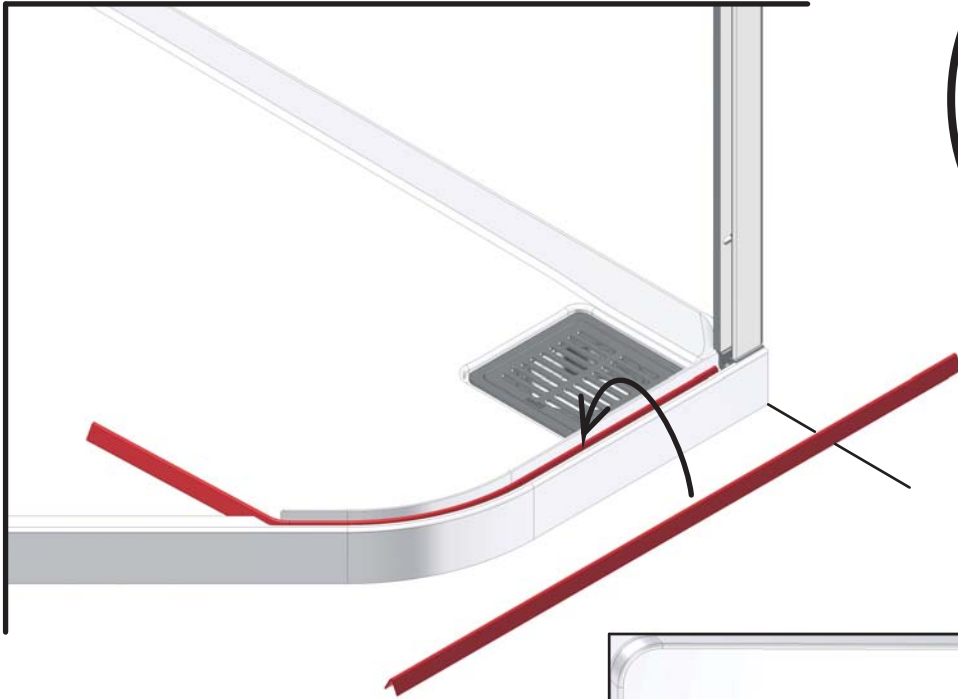
Stage 1: Fitting the Hinge Panel & Closure Panel Wall Mounts

1. Disassemble Top Cap, Wall Mount Cover and Wall Mount from both Hinge Panel and Closure Panel - keep all fixings & parts safe for following stages.
2. Locate and level Wall Mount on Tray. Mark fixing locations (x3min/x5max - see notes) - ensuring Wall Mount gap is central to Wall Mount Foot.
3. Drill holes and fit Wall Plugs. Clean area and silicone 100mm up from base of Wall Mount location/Tray - and into Wall Mount Foot at this point.
4. Fasten Wall Mount and level - ensuring Wall Mount gap is central to Wall Mount Foot.
5. Silicone inside the base of each Wall Mount - where the Wall Mount meets the Wall Mount Foot. Add Silicone into Wall Mount Foot - the glass will eventually sit here - and also a 'U' shaped line of Silicone at the joint between the Tray and the Wall Mount Foot.

STAGE 2

ILLUSTRATION SHOWS CORNER UNIT - LH HINGE

MATKI RECOMMEND TWO PEOPLE TO FIT PANELS



Stage 2: Place each Red Glass Fitting Strip into Tray Groove's

1. Fit the 'V' shaped, Red Glass Fitting Strip into each Glass Channel in the Tray. Bend the part around the radii of the tray - don't worry about any buckling here. The Red Glass Fitting Strip is a tool to aid the placing of each panel into the Tray - designed to ease the eventual location of the glass panels.

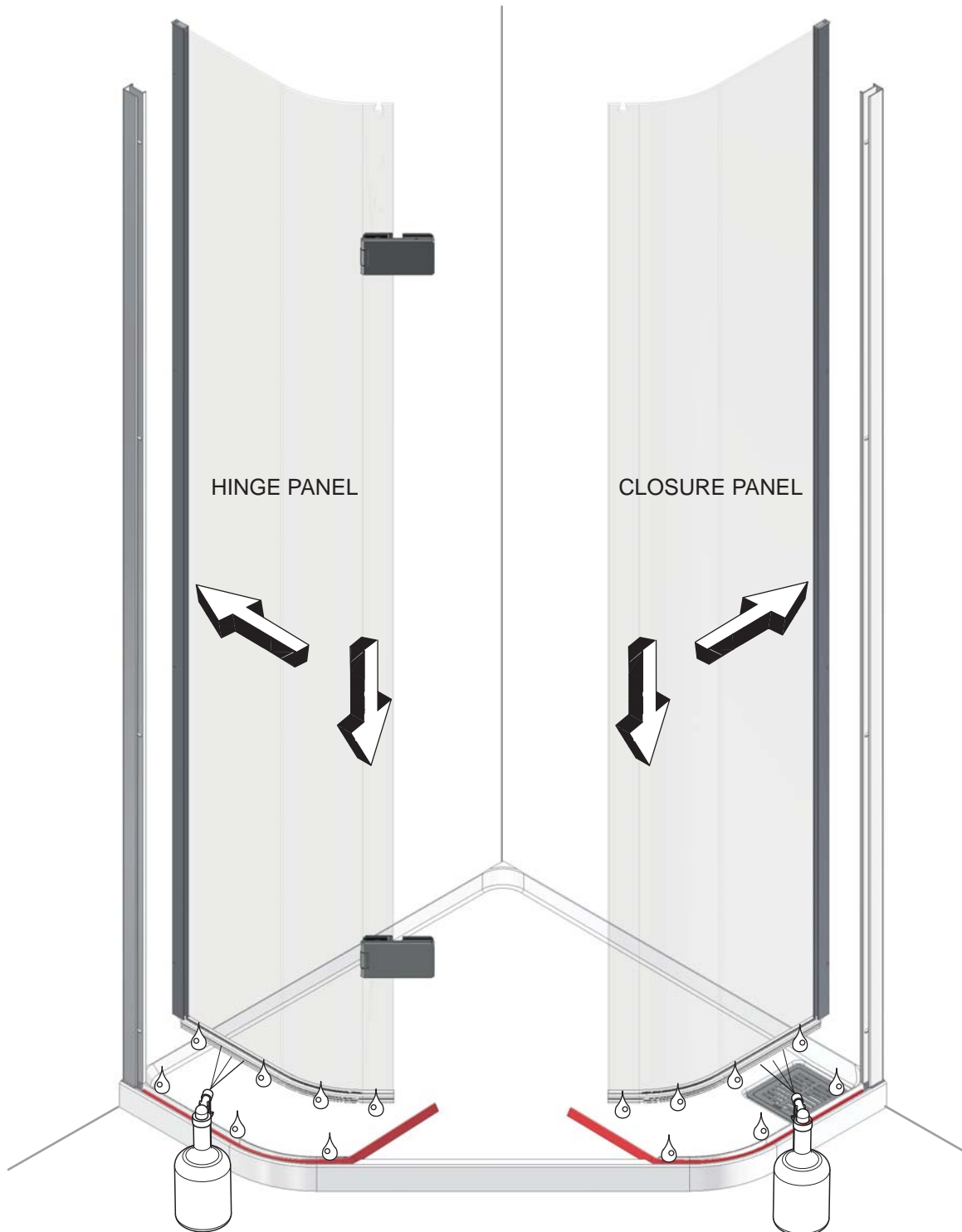
STAGE 2.1

ILLUSTRATION SHOWS CORNER UNIT - LH HINGE

MATKI RECOMMEND TWO PEOPLE TO FIT PANELS



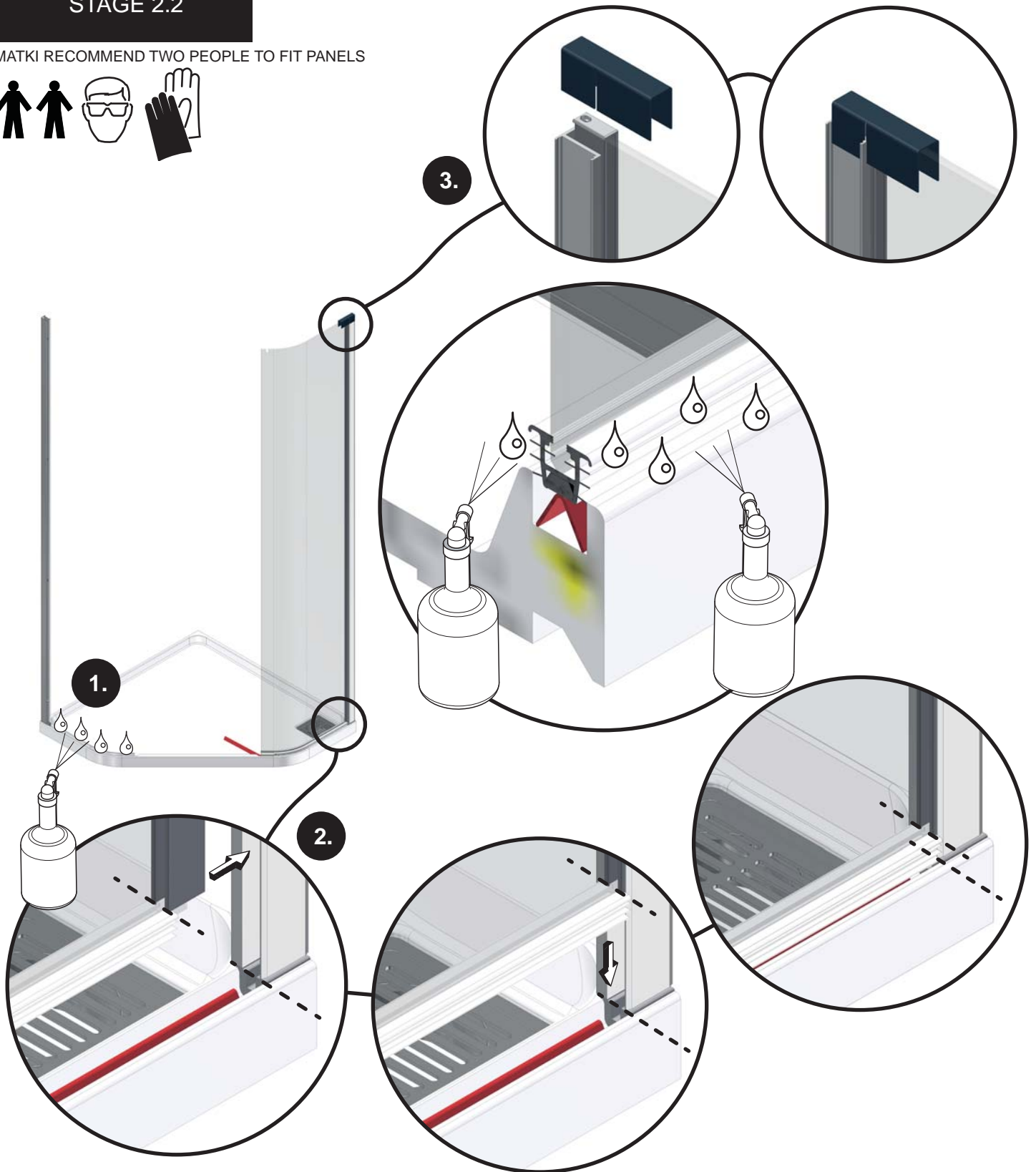
THE FOLLOWING STAGES (2.1 to 2.3) DESCRIBE THE PROCESS OF FITTING EACH SIDE PANEL INTO THE TRAY.



STAGE 2.2

ILLUSTRATION SHOWS CORNER UNIT - LH HINGE

MATKI RECOMMEND TWO PEOPLE TO FIT PANELS



Stage 2.2: Fitting the Hinge Panel & Closure Panel into Tray

- 1. IMPORTANT:** Complete the process for fitting each panel one at a time. Moisten the Tray Groove in the Tray and around the White Glass Seal at the bottom of Hinge Panel/Closure Panel - this will ease the water-tight fit into the Tray Groove. Tip* a little washing-up liquid added to water eases the operation further.
- 2.** Starting with the smallest panel first (if applicable) - carefully lift it into the Wall Mount Frame then lower it to sit on top of the Red Glass Fitting Strip, pre-placed into the Tray Groove (Stage 2). Rest it here to check the location/placement of the panel - carefully push or pull the panel into place ensuring the end of the White Glass Seal (on the bottom of each panel) butts up to and is in line with the Wall Mount Foot in the Tray Groove (under the Wall Mount). There should be no gap between these two parts once finally fitted in place.
- 3.** Fit the Blue 'U' Shaped Panel Support to the top of the Panel - slot it into place over the Wall Mount and around the Glass Panel. This part helps support the panel for the next stage.

STAGE 2.3

ILLUSTRATION SHOWS CORNER UNIT - LH HINGE

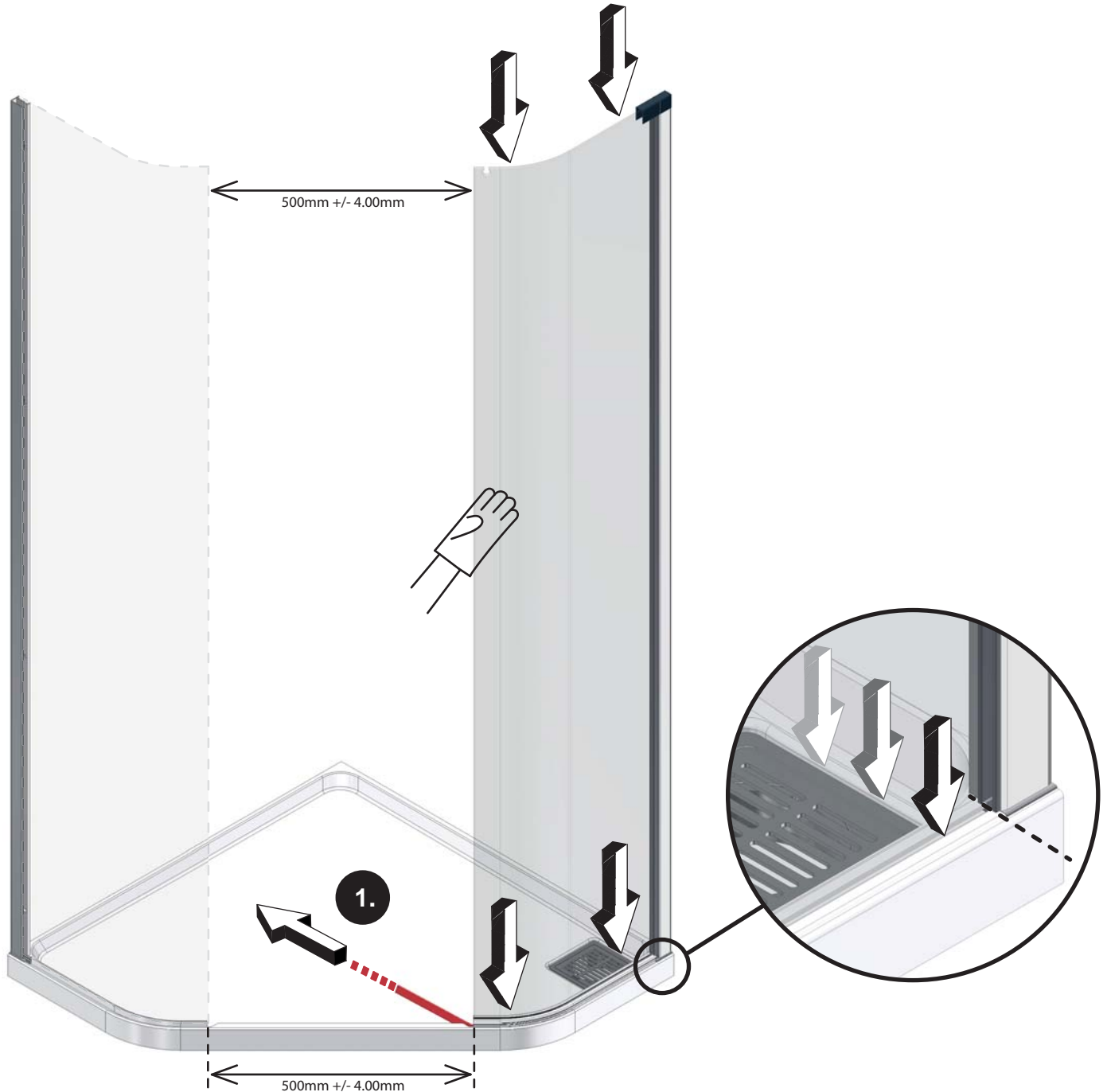
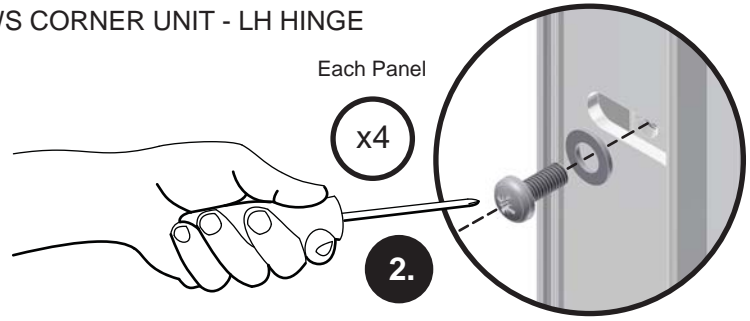
MATKI RECOMMEND TWO PEOPLE TO FIT PANELS



Each Panel

x4

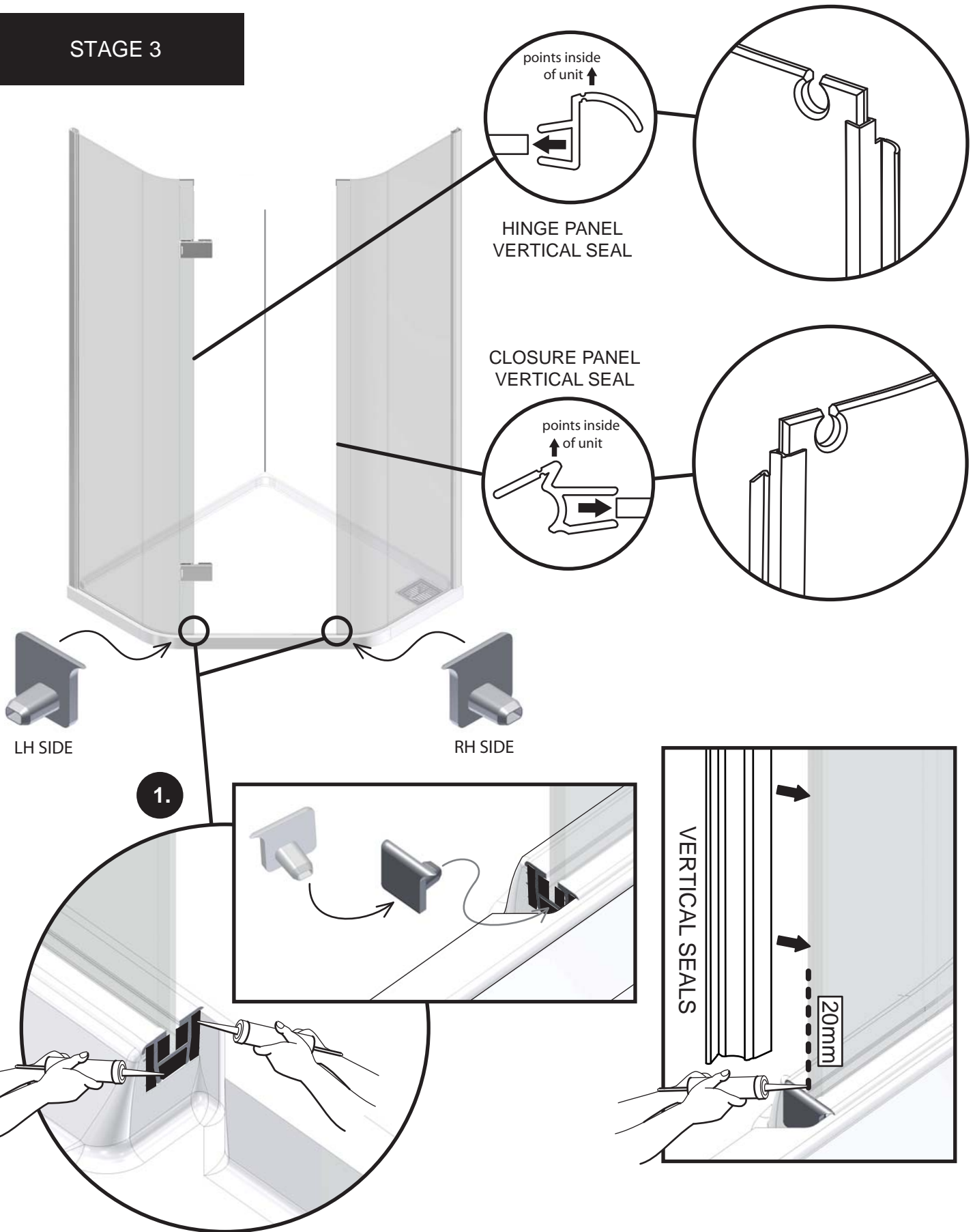
2.



Stage 2.3: Final Fitting of the Hinge Panel/Closure Panel into Tray.

1. With the Panel sitting in the exact location required to continue (Stage 2.2, ensuring the White Glass Seal butts up to and is in line with the Wall Mount Foot, and ensuring there is a line of Silicone in this area - Stage 1 **5.**) standing from inside the Tray with a colleague supporting the Panel from the outside - hold the panel from the middle, firmly & slowly pull out the Red Glass Fitting Strip from under Glass Channel. The Panel will drop neatly into the desired location easily.
2. Fasten the Hinge Panel/Closure Panel into each Wall Mount using M4 x 10 Pozzi Drive Screws and Washers from Stage 1. Check the opening size between each panel at the bottom - it should be 500mm +/- 4mm. A small amount of adjustment can be made at this stage to push/pull the panels in/out of the Wall Mount (loosen, adjust and re-tighten Wall Mount Screws once satisfied). The opening size at the top can be checked - but final fitting of this can be adjusted with the fastening of the Brace Bar at Stage 4.

STAGE 3

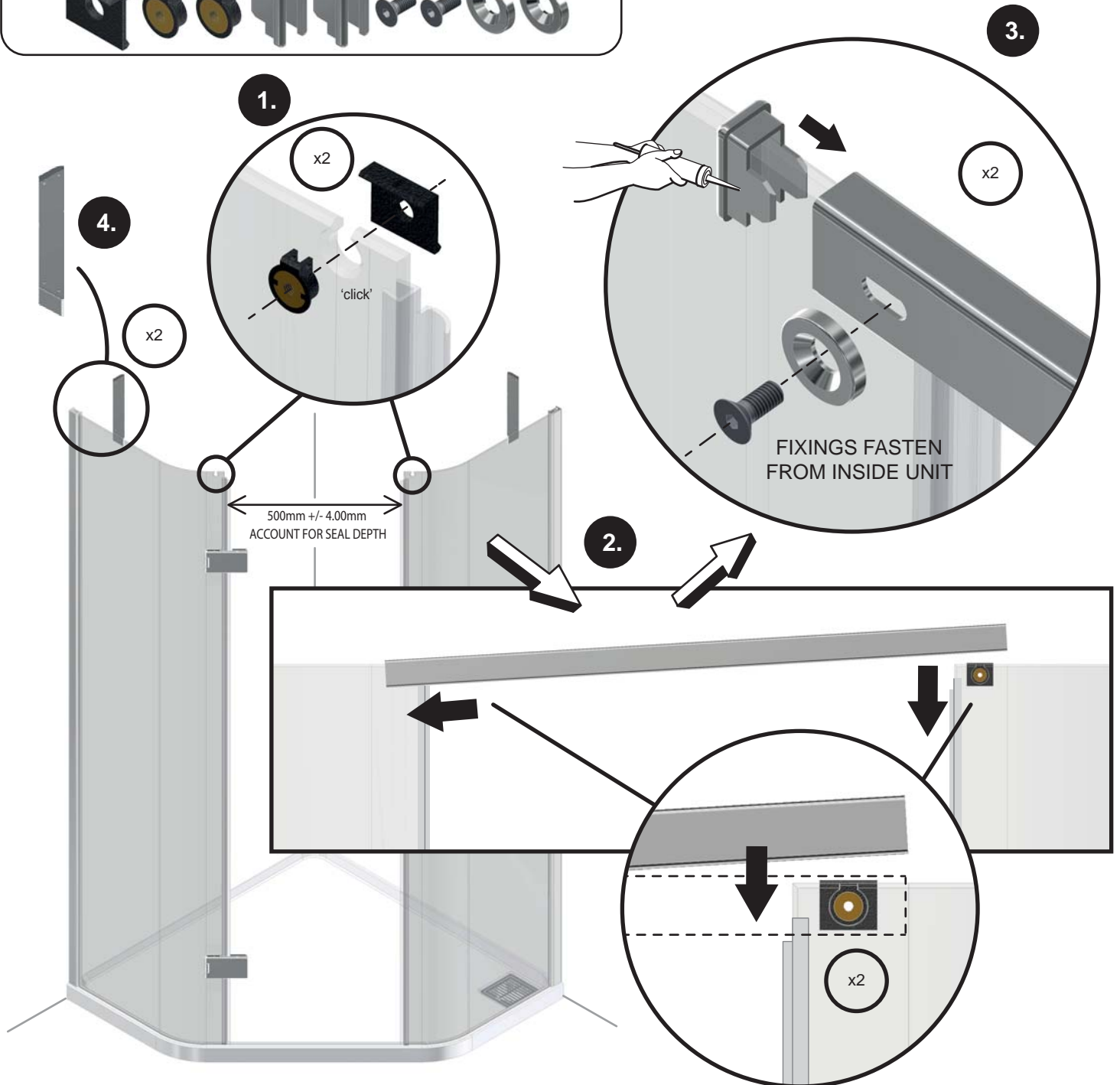


Stage 3: Fitting the White Rubber End Caps & Vertical Panel Seals (x2).

1. Fill the open ends of the White Glass Seal with Silicone - as shown - blanking the end from water ingress. Then push-fit White Rubber End Caps from the Kit of Parts into each seal as shown. These are handed so ensure you place them into the correct side.
2. Add a 20mm length of Silicone up the vertical edge of the glass panels. Ensuring you have the correct seal for correct panel in correct orientation (see illustrations) slide the seals on to the panels, push seals down onto the Tray Seal.

STAGE 4

ITEMS REQUIRED FROM 'KIT OF PARTS'

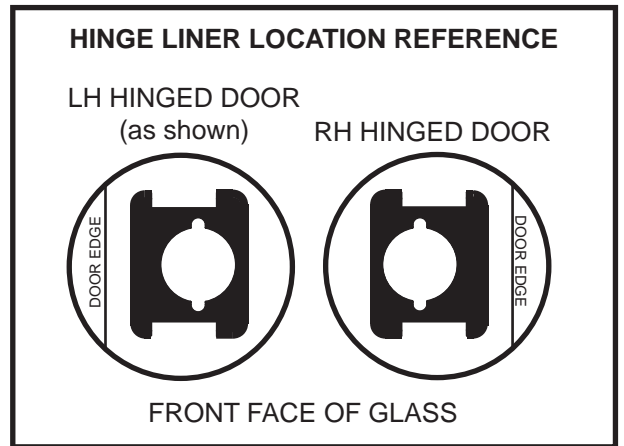
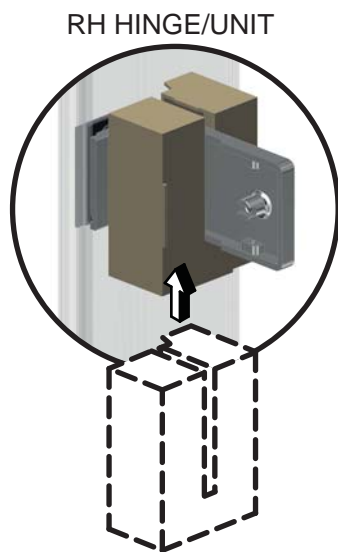
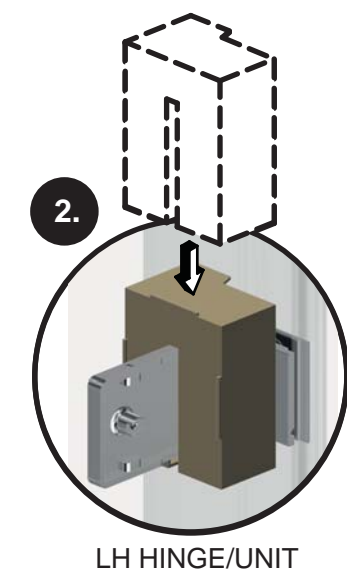
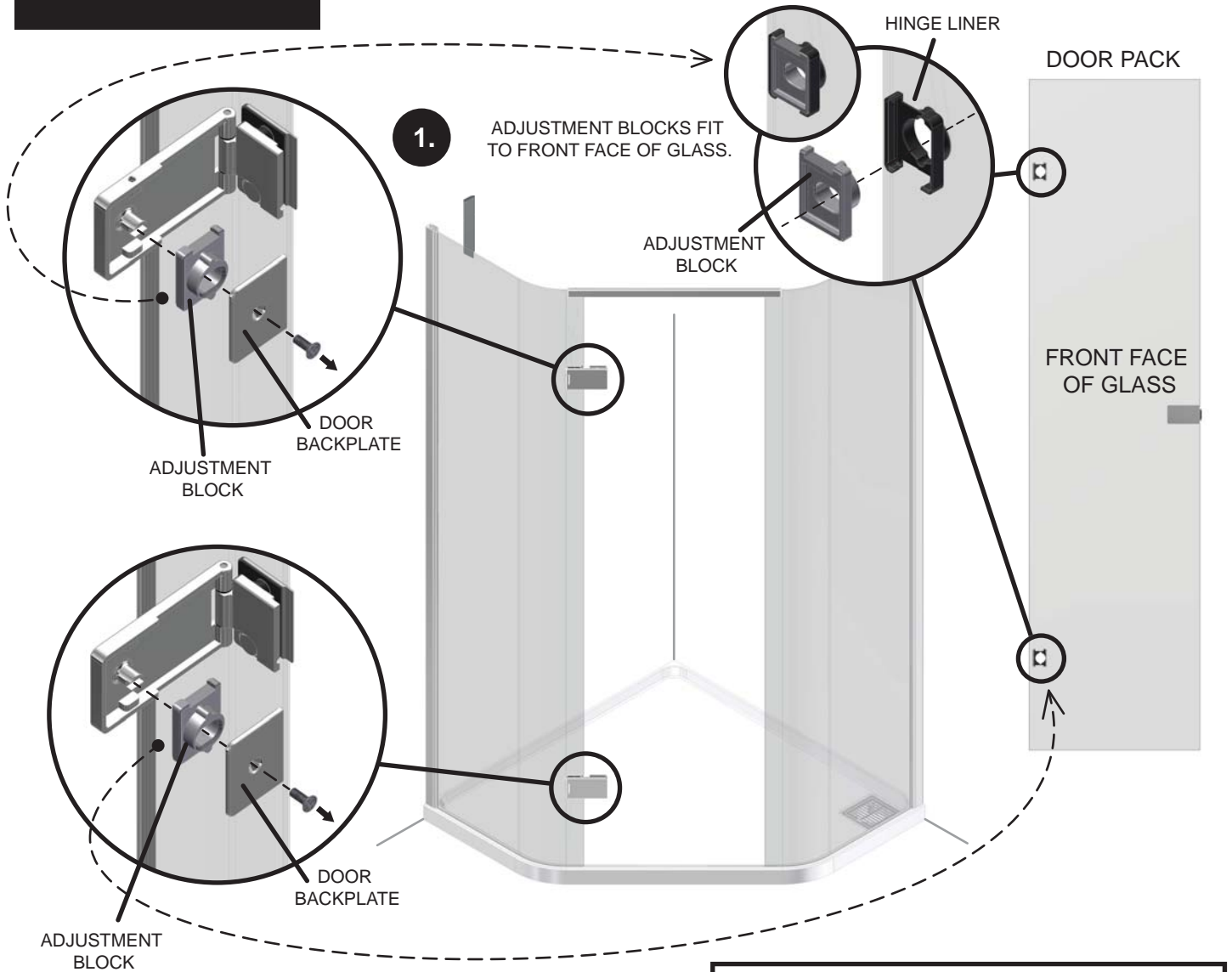


Stage 4: Fitting the Brace Bar to the Hinge Panel & Closure Panel & fitting the 2x Braces

1. Select parts required from the Kit of Parts (see image) and push-fit the 2x Counter Sunk Glass Fixings onto the required Brace Bar Packer (see image), through each glass panel's counter sunk hole.
2. Slide and push down the Brace Bar onto the Glass Panels as shown - note* the slotted fixing holes on the Brace Bar are directed inside the enclosure.
3. Slide the two Brace Bar End Caps on the glass and into the Brace Bar - a small amount of Silicone will hold these in place if required. Fasten the remaining screw fixings & Countersunk Fixing Washer from the Kit of Parts through the Brace Bar, into the panel fixing's and tighten with Allen Key provided. At this stage check the opening to be 500mm +/-4mm (accounting for the Seal depth). The two opposing panels can be pulled (into the unit) pushed (away from the unit) to achieve this dimension.
4. Once Brace Bar is fixed - fit both Corner Brace's to their respective panel. See separate Corner Brace Fitting Instructions provided.

STAGE 5

ILLUSTRATION SHOWS CORNER UNIT - LH HINGE



Stage 5: Hinge and Door fitting preparation

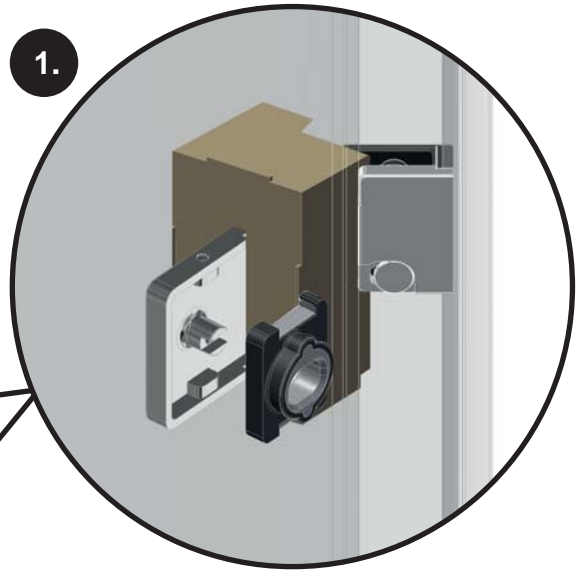
1. Remove each Door Backplate and Adjustment Block from within the Hinge assembly (see illustration 1). Push-fit each Adjustment Block onto the respective flexible rubber Hinge Liner on the door (see illustrations).
2. For ease of fitting the door - add the Cardboard Hinge Fitting Box (4634 AF x2) to the outside face of Top & Bottom Hinge - see separate instruction sheet (0976 AF) for this.

STAGE 6



MATKI RECOMMEND TWO PEOPLE TO FIT DOOR

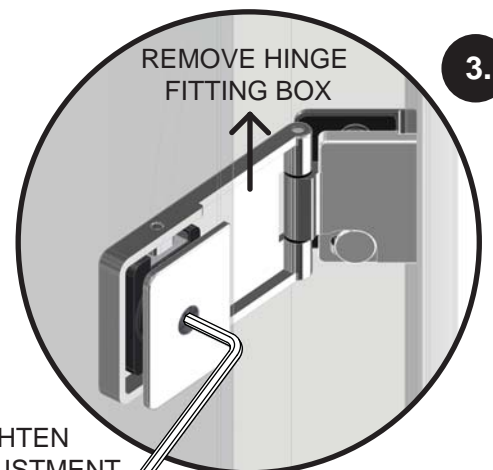
1.



2.



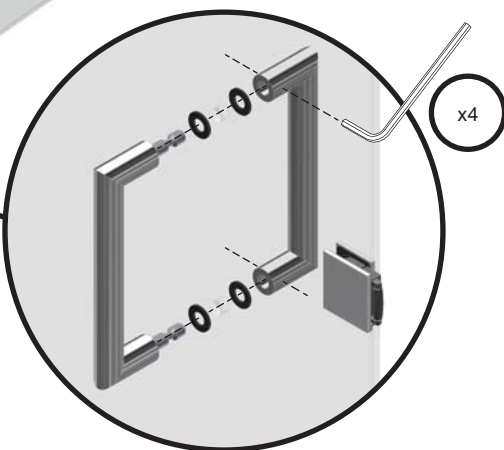
3.



LIGHTLY TIGHTEN
(SEE DOOR ADJUSTMENT
STAGE 7)

IMPORTANT:
DO NOT USE HANDLE TO
LIFT/LOAD DOOR

4.

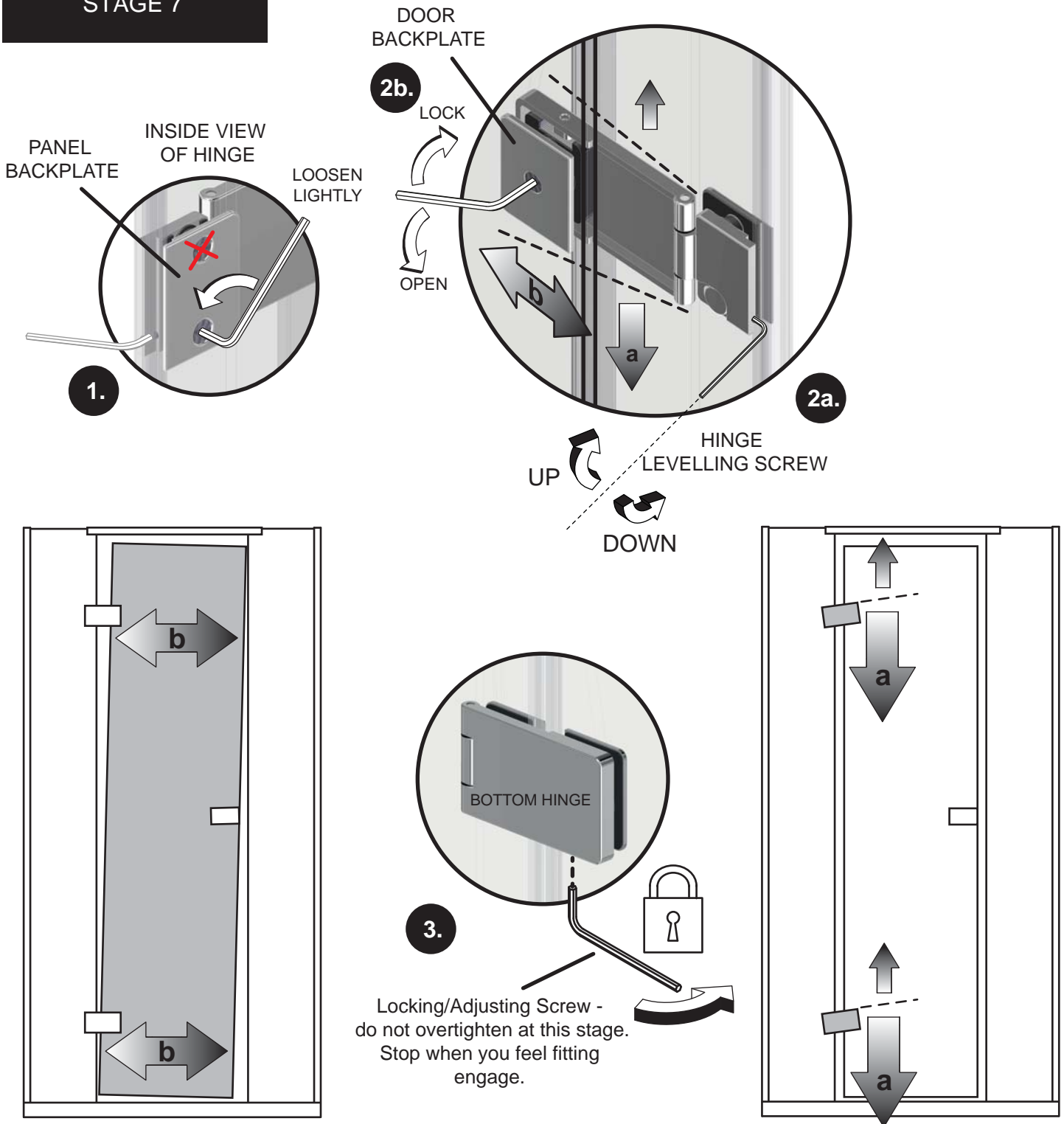


HANDLE OPTION

Stage 6: Fitting Door and alternative Handle options

1. With the Hinge Fitting Box in place - carefully lift Door and align the Adjustable Block (from Stage 5) onto each internal Hinge boss.
2. Fasten the two Door Backplates onto Door/Hinge.
3. Lightly tighten the Door Backplate to secure the Hinge to the Door (for Door adjustment see Stage 7) - and remove the Hinge Fitting Box (box will be crushed unless removed from Hinge).
4. If the Door has the Bar Handle - fit at this Stage.

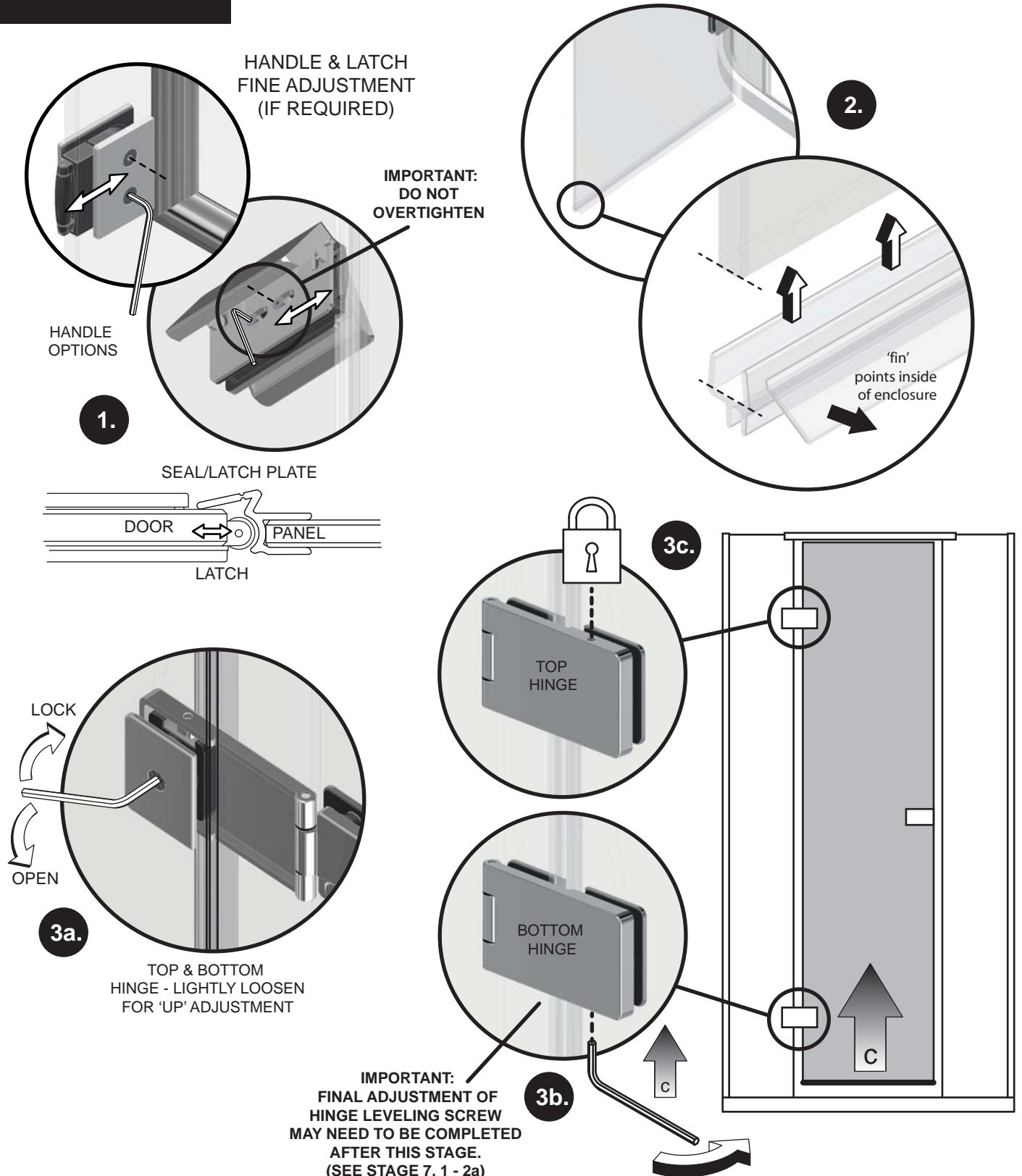
STAGE 7



Stage 7: Door adjustment & Hinge leveling

- 1.** From inside the unit, lightly loosen the **BOTTOM SCREW ON BOTH PANEL BACKPLATES**.
- 2a.** For the Hinges to be adjusted **DOWN** - push the door ajar and adjust Hinge Leveling Screw **DOWN**. Wind **UP** to adjust hinge up if required. Always visually check if Hinges are level with Door in 'closed' position. When satisfied, tighten the bottom screw on the Panel Backplate - do this on both Top & Bottom Hinges.
- 2b.** The Door can be adjusted left/right on either Hinge - to adjust the distance between either edge of the Door Glass and the Vertical Seals to improve sealing and Latch closure. Lightly loosen the Door Backplate Screw and slide Door back/forward to suit, and re-tighten screw.
- 3.** Lock off the Bottom Hinge (**BOTTOM HINGE ONLY AT THIS POINT**) - stop when you feel the Locking/Adjusting Screw engage. This can be used for further adjustment to lift the Door (see stage 8). If no adjustment up is required - lock off Top Hinge (See Stage 8 - 3c).

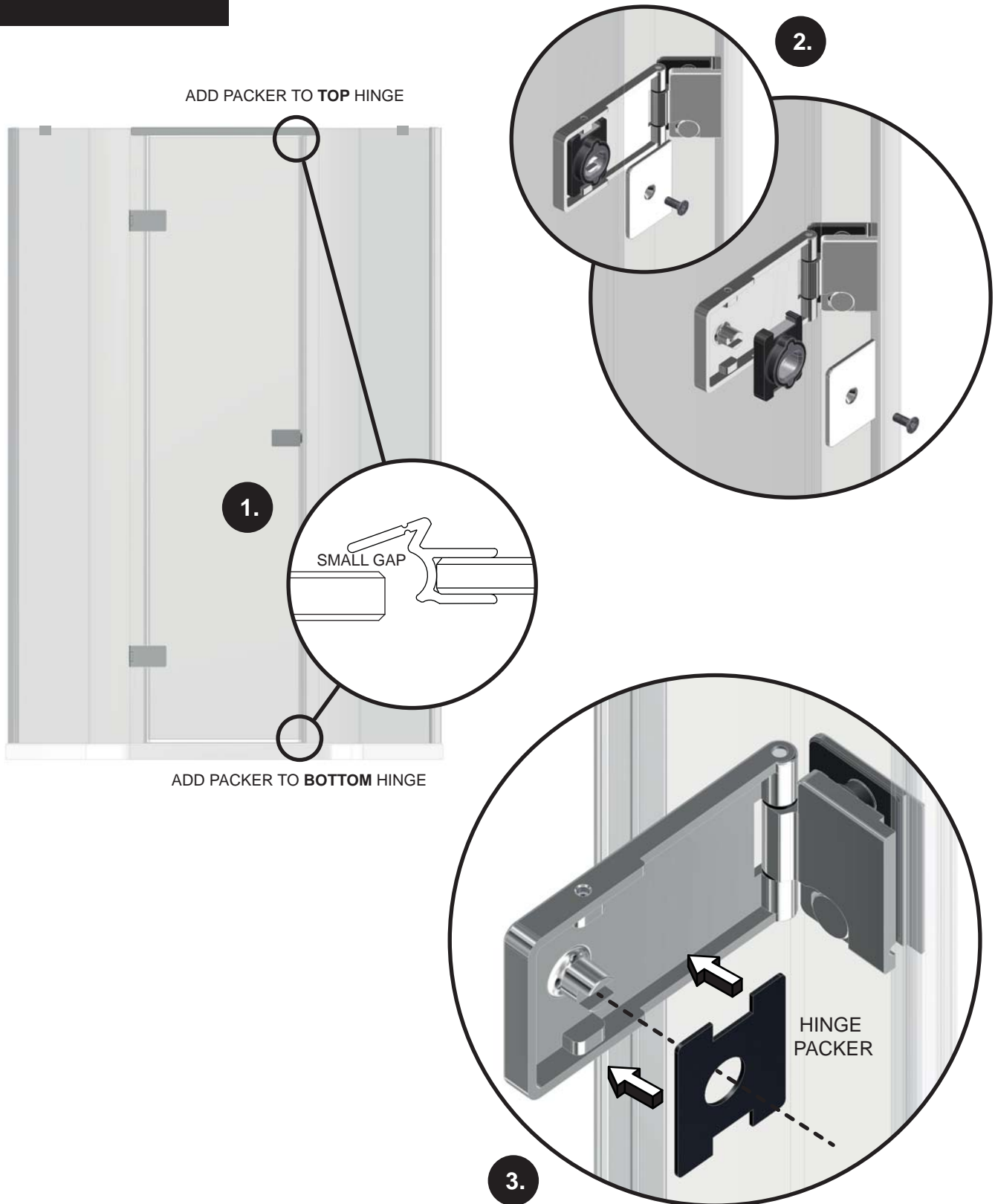
STAGE 8



Stage 8: Adjusting the Door 'up' if required

1. To further improve Latch closure the Handle/Latch (depending on handle option) can be adjusted in/out - see illustrations - **do not overtighten** as this may affect the 'soft return' movement of the standard handle.
2. Fit Threshold Seal onto bottom of Door - assess closure. If adjustment 'up' is required continue to 3a.
- 3a. Lightly loosen Door Backplate on **both** Hinges.
- 3b. Wind fixing towards the Door to adjust Door 'up'. Once desired height is achieved, fully lock off Door Backplate on both Hinges (3a). Adjusting the Door up may have affected the Hinge leveling - simply adjust the Hinge Leveling Screw (Stage 7, 1 to 2a) on **both Hinges** to level them.
- 3c. Lock off Top Hinge.

TROUBLESHOOTING



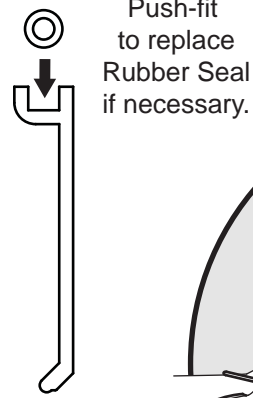
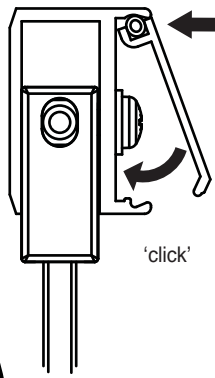
Troubleshooting

1. Occasionally - due to tolerances out of Matki's control - the Door requires extra adjustment to create a superior closure, this is done with the addition of the Hinge Packer. Determine if this is required on either Top & Bottom Hinges by checking the Door closure against Seal at the top, bottom or both areas (1).
2. Remove Door by reversing Stages 8-6.
3. Add Hinge Packer (from Kit of Parts) to desired Hinge/Hinges - peel off paper backing and place in Hinge. Repeat stages 6-8 to complete Door assembly prior to moving onto Final Fit & Silicone stage.

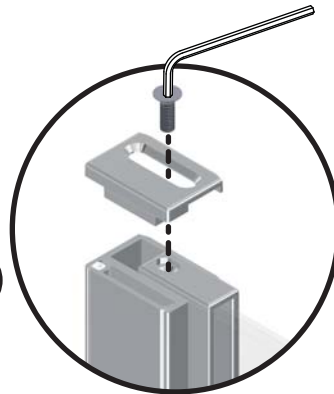
FINAL FIT & SILICONE



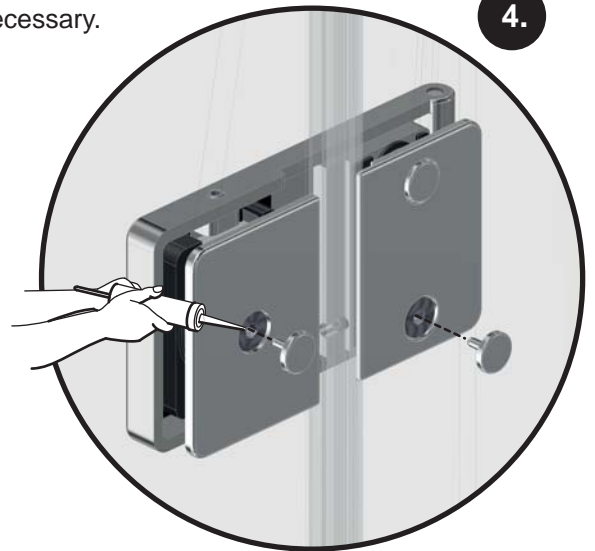
1.



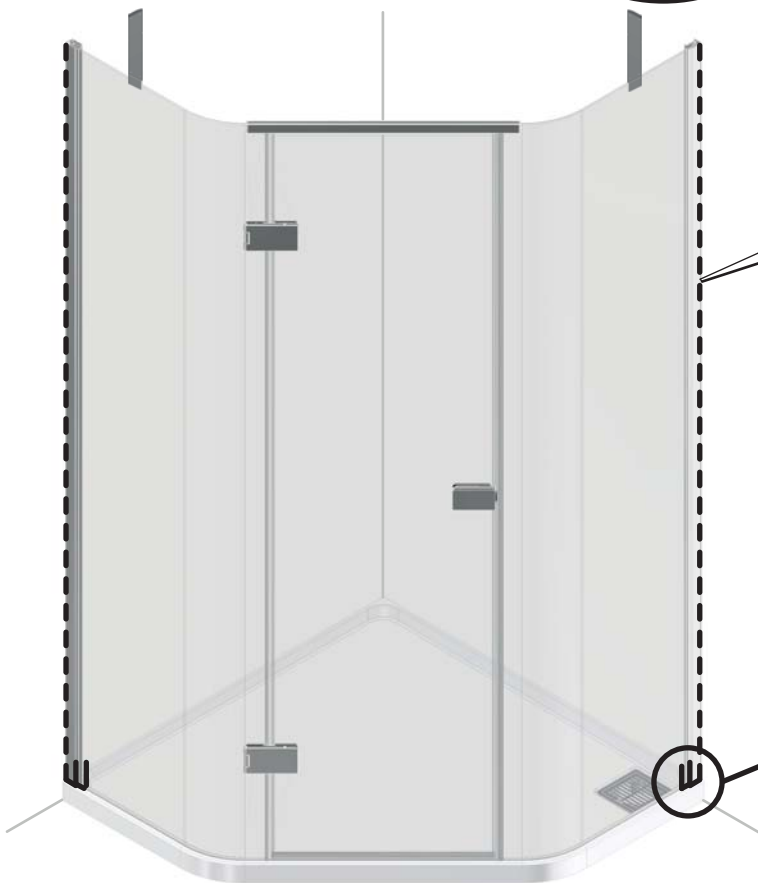
4.



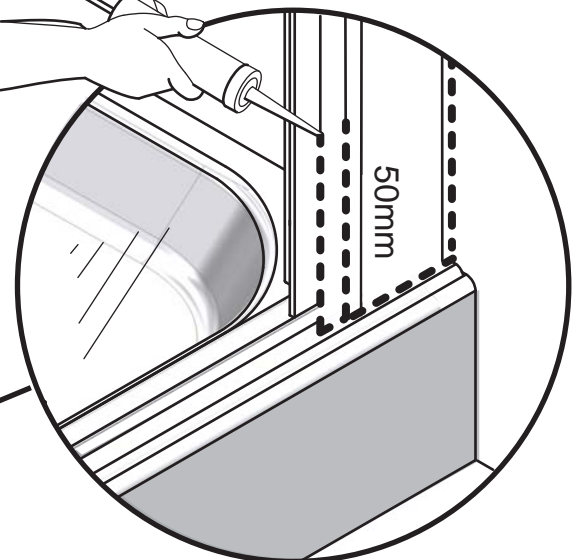
2.



TOP AND BOTTOM HINGE (x6)



3.

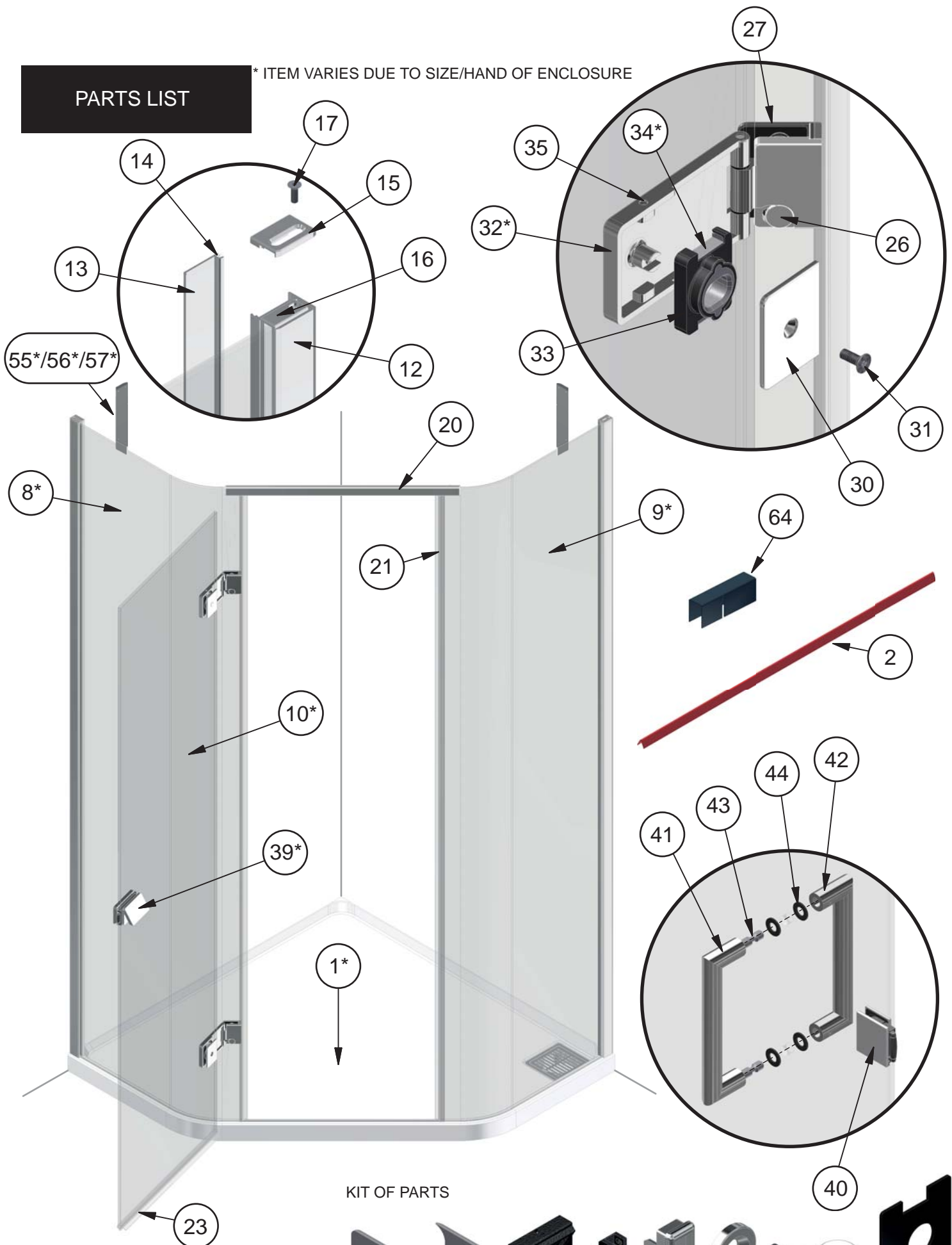


Final Fit & Silicone

1. Fit Wall Mount Covers from Stage 1 to both Wall Mounts.
2. Fix Top Caps from Stage 1 to the top of both Wall Mounts.
3. Apply a thin bead of Silicone all the way up the outside of both Wall Mounts - between the Wall Mount and the tiles. Finally silicone along the bottom edge of both Wall Mounts - where the Wall Mount meets the Tray - and approximately 50mm up the joints in each Wall Mount.
4. Push-fit the Fixing Covers from the Kit of Parts to the back face of the Hinge on the inside of the Enclosure - you may find you need to trim these with snips/pliers to fit or add a small amount of Silicone to hold them in place - once fitted these cover up adjustment screws, so ensure all adjustment required is complete.

PARTS LIST

* ITEM VARIES DUE TO SIZE/HAND OF ENCLOSURE



KIT OF PARTS



PARTS LIST

PARTS LIST			
ITEM	DESCRIPTION	PART No.	QTY
1*	QUINTESS TRAY	1000 QUINTESS TRAY	1
2	RED QUINTESS GLASS FITTING STRIP	8856 RED	2
3	SQUARE TRAY GRILL	7491 A SILVER	1
4	SQUARE WASTE FLANGE	5861 A SILVER	1
5	SQUARE THREADED WAIST FLANGE	5957 A SILVER	1
6	SHOWER TRAP ASSEMBLY	LPW90	1
7	PANELS & DOOR		
8*	QUINTESS HINGE PANEL	8086 M CLEAR/PLAIN	1
9*	QUINTESS CLOSURE PANEL	8095 M CLEAR/PLAIN	1
10*	DOOR - DAMPENED HANDLE	8108 M CLEAR/PLAIN	1
11	QUINTESS WALL MOUNT 'H' SECTION	6368 A SILVER	2
12	135 WALL MOUNT	6360 A SILVER	2
13	WALL MOUNT COVER	6361 A SILVER	2
14	SILICONE RUBBER TUBING	1704 AF	2
15	WALL MOUNT TOP CAP	5833 A SILVER	2
16	H' SECTION TOP CAP	5832 A SILVER	2
17	CSK SKT SCREW	1517 A SILVER	2
18	M4 x 10 POZI DRIVE	1246 A SILVER	8
19	WASHER	1914 AF	8
20	STAINLESS STEEL BRACE BAR	6393 A SILVER	1
21	QUINTESS CLOSURE SEAL	8833 CLEAR	1
22	QUINTESS HINGE PANEL SEAL	8834 CLEAR	1
23	DOOR SEAL (NOTCHED)	8828 CLEAR	1
24			
25	HINGE ASSEMBLY		1
26	ADJUSTABLE FASTENING 1	6405 AF	2
27	PANEL BACKPLATE + GASKET	6400 A SILVER + 7764 AF	2
28	SPECIAL FIXING 2	6407 AF	4
29	Hexagon Socket Set Screw	1298 A SILVER	2
30	DOOR BACKPLATE + GASKET	6401 A SILVER + 7765 AF	2
31	SPECIAL FIXING 1	6406 AF	2
32*	LH TOP & RH BOTTOM FRONT HINGE PLATE	6428 A SILVER	1
33	HINGE ADJ BLOCK LINER	6409 BLACK	2
34*	ADJUSTMENT BLOCK (LH SIDE)	6403 AF	2
35	M5 x 10 SOCKET SET SCREW	1467 A SILVER	2
36	Hexagon Socket Set Screw Dog point	1308 A SILVER	2
37*	RH TOP & LH BOTTOM FRONT HINGE PLATE	6429 A SILVER	1
38	HANDLE*		
39*	SOFT RETURN HANDLE (LH)	6160 AF	1
40	LATCH ASSEMBLY		1
41	LC FRONT HANDLE	2620 A SILVER	1
42	LC INSIDE HANDLE	2621 A SILVER	1
43	LC HANDLE CONNECTOR	1778 AF	2
44	LC HANDLE WASHER	2411 BLACK	4
45	M5 x 6 SOCKET SET SCREW	1502 A SILVER	4
46	KIT OF PARTS		
47	HINGE PACKER	6086 BLACK	2
48*	CSK GLASS FITTING	6414 BLACK	2
49*	6mm BRACE PACKER	6413 BLACK	2
51	BRACE BAR END CAP	6416 A SILVER	2
52	TOP TRACK FITTING + GASKET	6415 AF + 7767 AF	2
53	SCREW COVER	6411 A SILVER	6
54	CSK SKT SCREW	1411 A SILVER	2
55*	EXTRA SMALL BRACE BAR	(LH) 7342 AF OR (RH)7345 AF	1
56*	SMALL BRACE BAR	(LH) 7343 AF OR (RH)7346 AF	2 or 1
57*	LARGE BRACE BAR	(LH) 7344 AF OR (RH)7347 AF	2 or 1

PARTS LIST			
ITEM	DESCRIPTION	PART No.	QTY
58	NEW ILLUSION SEAL END CAP LH	8831 WHITE	1
59	NEW ILLUSION SEAL END CAP RH	8830 WHITE	1
*60	1200/1400 UNIT. LARGE PANEL SEAL ASSEMBLY	8841 AF	1
*61	1200/1400 UNIT. LARGE PANEL SEAL ASSEMBLY	8843 AF	1
*62	800, 900 & 1000 UNIT. SMALL PANEL SEAL ASSEMBLY	8842 AF	1
*63	800, 900 & 1000 UNIT. SMALL PANEL SEAL ASSEMBLY	8840 AF	1
64	BLUE 'U' SHAPED PANEL GRAB	8832 AF	1

MAINTENANCE

Matki Glass Guard Easy Clean Surface Protection (optional) and General Cleaning Guide

Cleaning Instructions

Matki Glass Guard allows water to form minute beads which easily trickle off the surface of the glass. This makes the glass easier to clean - the glass does not need to be cleaned as frequently, but it does require occasional maintenance. As less cleaning is required the use of detergents can be minimised thus helping to protect the environment. The lifespan of the Matki Glass Guard is dependant on the frequency of use of the shower and the degree of water hardness.

The combination of alkaline materials and humidity affects glass in an extremely aggressive way. Do not use bleach, alkaline, acid-based or aggressive and abrasive glass cleaners, detergents or household cleaning products on the glass or frames.

We recommend that glass is washed down with clean water and a soft clean cloth or sponge and dried off with a microfibre cloth.

The special coating is only present on the inside of the glass.

Matki Glass Guard is guaranteed for 2 years provided that the guidelines and cleaning instructions are followed.

Aluminium and Chrome parts should be cleaned with a mild non scratch household cleaner and a soft cloth or sponge.

Do not use acidic-based descaler products or products which are unsuitable for cleaning enamelled surfaces, including abrasive cleaners or cleaners containing bleach or solvents, as the products will effect the anodised framework. Under no circumstances use cleaners with a pH level exceeding 8.

Matki does not recommend the use of 'Leave-on' shower cleaners on Matki Glass Guard Products.

Water Softeners and Glass Guard - Certain types of water softeners increase the alkalinity of the water due to a carry-over of Chloride during re-generation which can cause aggressive water spots on both untreated and Glass Guarded glass. If using a water softener we recommend a two-cylinder machine with automatic re-generation instead of a timer. If a single-cylinder water softener with timer is already installed it is recommended that after each shower excess water is removed from the glass with a squeegee or with a microfibre cloth.

Annual recommended maintenance - Matki recommend annually lubricating the barrel of the hinge with a lubricating spray such as WD-40 to remove dust build-up and to aid the movement of the hinge.



Wash down with clean warm water and a soft clean cloth or sponge, then wiped dry.



Do not use bleach, alkaline or acid-based, aggressive or abrasive cleaning products.

Flash Bathroom Spray or Cif Bathroom Spray can be used on Matki Products. Read manufacturers label before using any cleaning materials.

IMPORTANT

Matki Glass Guard is guaranteed for 2 years. It is essential that the cleaning instructions are followed in order to maintain the hydrophobic properties of the glass coating. In the event of the failure to comply in any way with these instructions, any warranty or guarantee will be null and void.

MATKI PLC, CHURCHWARD ROAD, YATE, BRISTOL, BS37 5PL

TELEPHONE: 01454 322888 (CUSTOMER SERVICES). EMAIL: techsupport@matki.co.uk

CE

matki
13

Matki PLC, Churchward Road, Yate,
Bristol BS37 5PL

EN 14428:2008+A1