

# matki | S H O W E R I N G

## EAUZONE PLUS EPST- THREE SIDED SLIDER

INSTALLATION

PARTS LIST



**MATKI PLC, CHURCHWARD ROAD, YATE, BRISTOL, BS37 5PL**  
TELEPHONE:01454 328816 (AFTER SALES) FAX:01454 328821 EMAIL: techsupport@matki.co.uk



**EPST LH**



**EPST RH**

THE STAGES IN THIS INSTALLATION BOOKLET SHOW AN EPST LH INSTALLATION REVERSE FOR RH

## IMPORTANT

## TOOLS REQUIRED

Masonry Drill bit 6mm, Tape Measure, Screw Drivers, Safety Glasses, Electric Drill, Level, Pencil, Adjustable Spanners, Non Slip Gloves

Before disposing of carton and/or commencing assembly, please check all the parts to ascertain that none are missing and they are all undamaged. No claim for missing/damaged parts will be accepted once the packing carton has been disposed of and/or assembly has commenced. In case of query contact your Stockist with details of model number and details of serial number.

### PREPARATION IMPORTANT

1. Please read complete installation instructions before fitting for enclosure and tray (if fitting).
2. We recommend that two people are available for fitting of the door Stage 8. The **Eauzone Plus** range is **10mm glass** construction. Large glass panels are very heavy. We recommend the use of safety glasses and non slip gloves when handling the glass panels.
3. Ensure that the product can be **fixed** to a **solid masonry wall** or suitable **timber stud work grade C16/C24** in the area behind the wall frames and panel fixing brackets.
4. Shower trays or tiled floors **must be absolutely level** where enclosures are fitted.
5. If fitting a tray we recommend a **drainage test** is carried out before the tray is tiled in position.
6. The assembly should be installed onto a waterproof wall covering and installed after the tray and wall coverings are in place. Trays with tiling lips should be let into the wall with the tiling lip flush with the wall to allow the tiling to overlap the tiling lip.
7. Seal between tray and tiles. Remove any excess sealant from area/joint between the tray and the tiles where the wall mount is to be fitted. This will ensure the wall mount fits correctly to the wall and tray/or tiled floor.

**CAUTION: TEMPERED GLASS CANNOT BE CUT, POLISHED METAL AND CHROME CAN BE SCRATCHED. CAREFULLY REMOVE ASSEMBLY FROM CARTON, DO NOT PLACE GLASS ON HARD FLOOR OR EXPOSE EDGES TO IMPACT. DO NOT CUT TOP TRACK IN ANY CIRCUMSTANCES.**

## DIMENSIONS

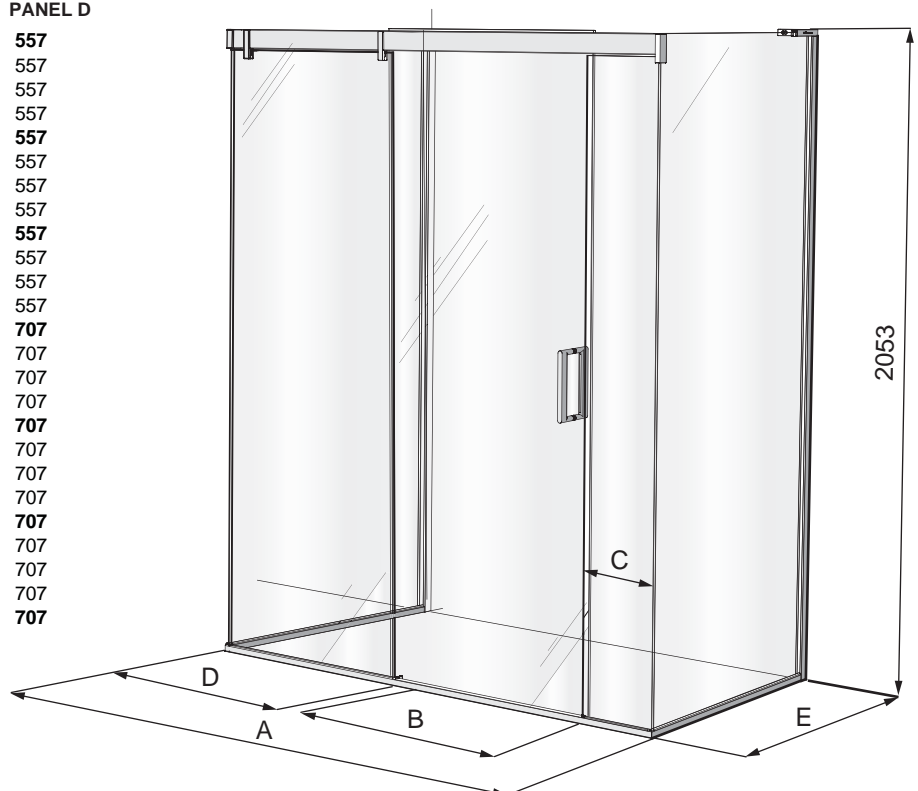
Dimensions are approximate

### EAUZONE PLUS SLIDER THREE SIDED

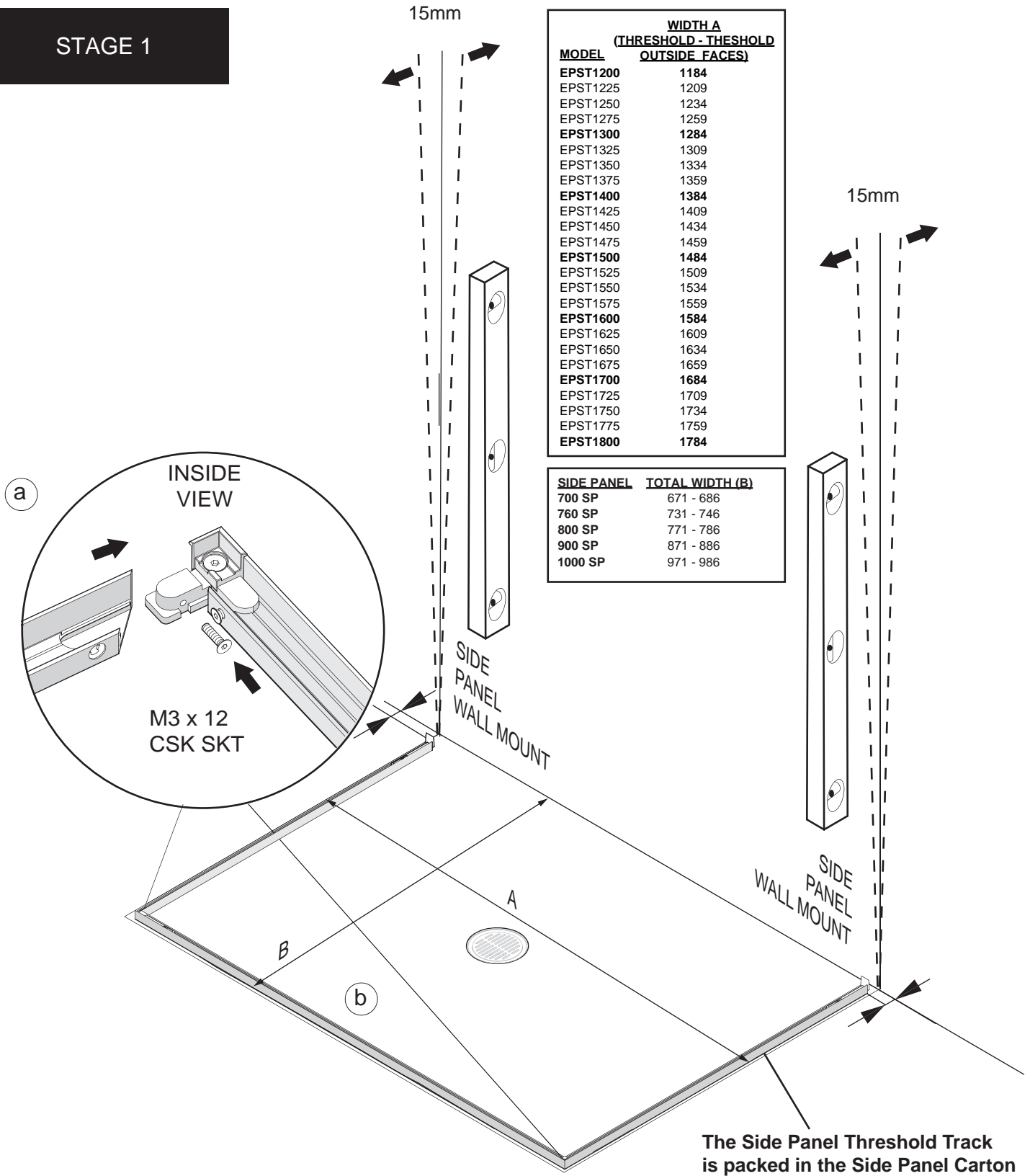
MODEL	TOTAL WIDTH A	DOOR OPENING B	CLOSURE PANEL C	FIXED PANEL D
EPST1200	1190	465	56	557
EPST1225	1215	465	81	557
EPST1250	1240	465	106	557
EPST1275	1265	465	131	557
EPST1300	1290	465	156	557
EPST1325	1315	465	181	557
EPST1350	1340	465	206	557
EPST1375	1365	465	231	557
EPST1400	1390	465	256	557
EPST1425	1415	465	281	557
EPST1450	1440	465	306	557
EPST1475	1465	465	331	557
EPST1500	1490	610	56	707
EPST1525	1515	610	81	707
EPST1550	1540	610	106	707
EPST1575	1565	610	131	707
EPST1600	1590	610	156	707
EPST1625	1615	610	181	707
EPST1650	1640	610	206	707
EPST1675	1665	610	231	707
EPST1700	1690	610	256	707
EPST1725	1715	610	281	707
EPST1750	1740	610	306	707
EPST1775	1765	610	331	707
EPST1800	1790	610	356	707

### SIDE PANEL

MODEL	TOTAL WIDTH E
700 / SP	671- 686
760 / SP	731- 746
800 / SP	771- 786
900 / SP	871- 886
1000 / SP	971- 986



# STAGE 1



The Side Panel Threshold Track is packed in the Side Panel Carton

**This stage is describing the placement of the Threshold track.**

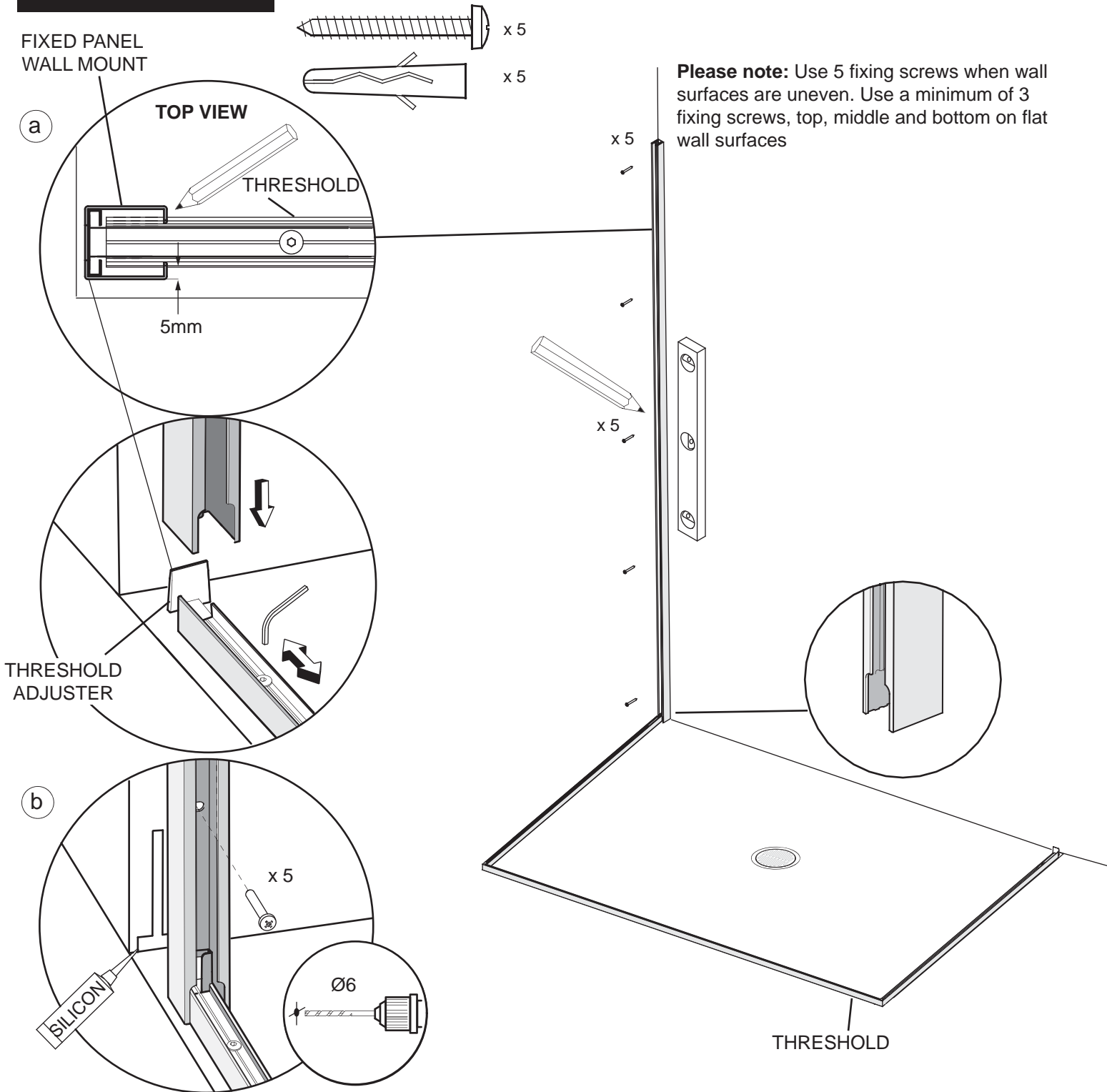
**Important:** Check the walls for upright before positioning the threshold track. If the wall is leaning **outward** at the top adjust the threshold dimension inwards to maximise the adjustment range. If the wall is leaning **inwards** at the top adjust the threshold track outwards to maximise the adjustment range.

**a.** Fit the threshold mitred ends together using the M3 x 12 Csk socket screws, pre-assembled to the threshold corner fixing brackets. The threshold should be at an angle of 90°. **The side panel threshold tracks are packed in the accessories carton.**

**b.** Place the threshold assembly onto the tray/floor surface. Measure and mark the distance from the wall to the outside face of the threshold (Dimension B). **Check walls are plumb.** Measure and mark the distance between the outside faces of the threshold extrusions (Dimension A). The EPST Slider has adjustable wall mounts to compensate for out of plumb walls. There is 15mm of adjustment in both the wall mounts. If walls are out of plumb ensure placement of the threshold allows for the out of plumb walls.

## STAGE 2

IMAGES SHOW RH OPENING INSTALLATION.



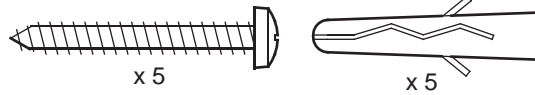
### This stage is describing the fitting of the Corner side panel wall mount

**a.** Place the horizontal threshold into position on tray. (If fitting close to the front edge of the tray take into account that the outside face of the side panel wall mount sits 5mm in front of the threshold). Position the side panel wall mount on to the wall over threshold. Note: The wall mount has a top and bottom(threshold cut-out should be at bottom). Ensure the threshold adjuster fits up into the back of the wall mount extrusion in the recess as shown. Adjust the position of threshold adjuster as required, to adjust loosen the screw only 1/2 a turn, re-tighten after adjustment, do not over tighten.

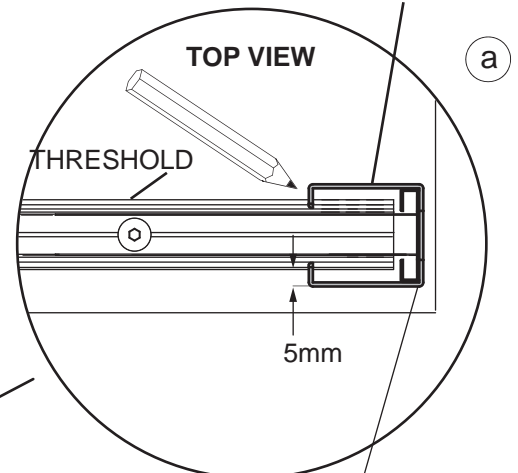
Plumb the wall mount for upright and mark the fixing holes in the centre of the slots.

**b.** Drill 5 x fixing holes in the wall and insert wall plugs. Clean area and apply silicon sealant to the area behind the wall mount between the tray and tiles and 100mm up the wall, central to the width of the wall mount. Fit the wall mount using the No.8 x 32mm Pan Head Screws.

## STAGE 3

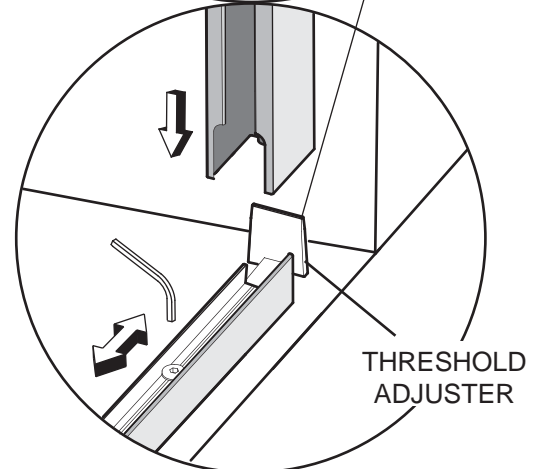
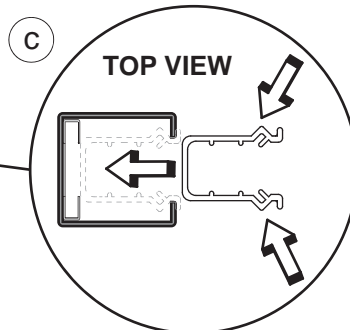


FIXED PANEL WALL MOUNT

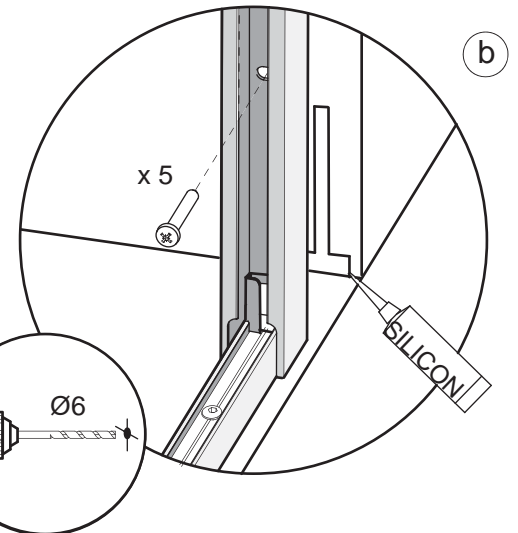


**Please note:** Use 5 fixing screws when wall surfaces are uneven. Use a minimum of 3 fixing screws, top, middle and bottom on flat wall surfaces

x 5



THRESHOLD ADJUSTER



x 5

Ø6

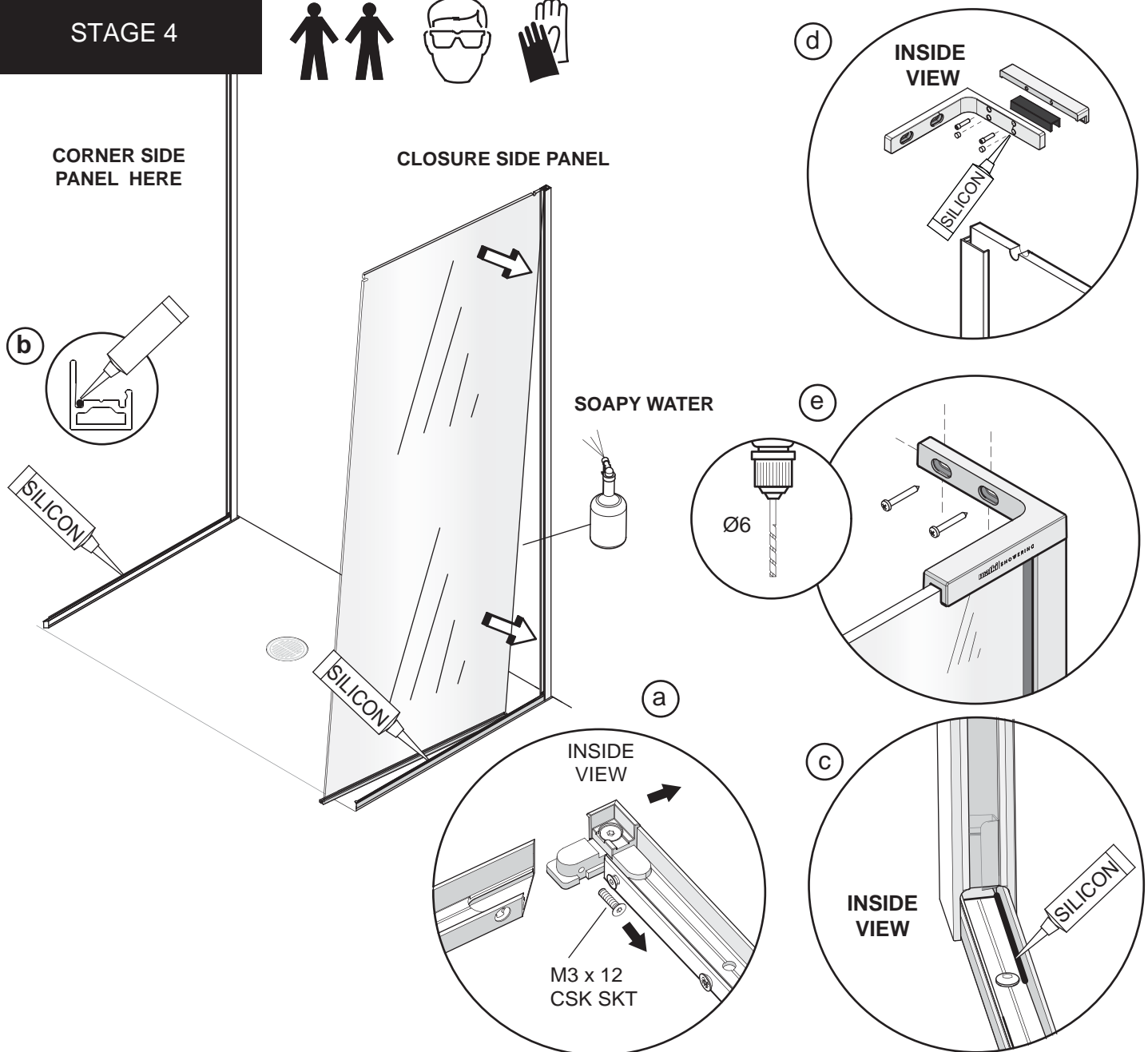
SILICON

Temporarily remove this front threshold extrusion before fitting the Side Panels.

### This stage is describing the fitting of the Closure side panel wall mount and securing the threshold.

- Position the side panel wall mount over the threshold in the position marked on the previous stage. Ensure the threshold adjuster fits up into the back of the wall mount extrusion in the recess as shown. Adjust position of threshold adjuster as required, to adjust loosen screw only 1/2 a turn, re-tighten after adjustment, do not over tighten. Plumb the wall mount for upright and mark the fixing holes in the centre of the slots.
- Drill 5 x fixing holes in the wall and insert wall plugs. Clean the area and apply silicon sealant to the area behind the wall mount between the tray and tiles and 100mm up the wall, central to the width of the wall mount. Fit the wall mount using the No.8 x 32mm Pan Head Screws.
- Important :** The threshold must be secured to the shower tray or tiled surface. Holes are provided in the threshold, mark and drill the threshold to the shower tray using the No.8 Pan head self tapping screws supplied in the kit of parts. Drill into the shower tray using a 3.5mm pilot hole. If fixing to a tiled or marble surface use wall plugs and a 6mm drill ensuring that any waterproof membrane is not damaged. Only secure the Side panel threshold frames, the front threshold is to be removed so that the side panels can be fitted.
- Fit the wall mount seals into both the wall mounts by pinching the sides together and fitting them into the wall mounts until they snap into position, the bottom of the seal should sit on top of the horizontal extrusion.

## STAGE 4



**This stage is describing the fitting of the closure side panel and corner side panel. We recommend 2 people are available for this stage, and the use of Safety glasses and Non slip gloves when handling glass panels.**

**a.** Before fitting the side panel temporarily remove the Front threshold extrusion at the corners. Remove the M3 x 12 csk screw from the corner brackets and store safely to be re- assembled once both side panels are fitted.

**b.** Apply a small bead of Silicon along the full length of the inside bottom corner of both side panel thresholds before fitting the panels.

**c.** Apply a bead of Silicon along the front inside edge of the Threshold up to the adjuster screw.

**IMPORTANT** Remove the packing blocks from the bottom of the side panel before fitting. Lift the side panel onto the threshold extrusion as close as possible to the wall mount **keep the panel upright**. Carefully push the panel into the side panel wall mount taking care not to damage the Closure panel extrusion.

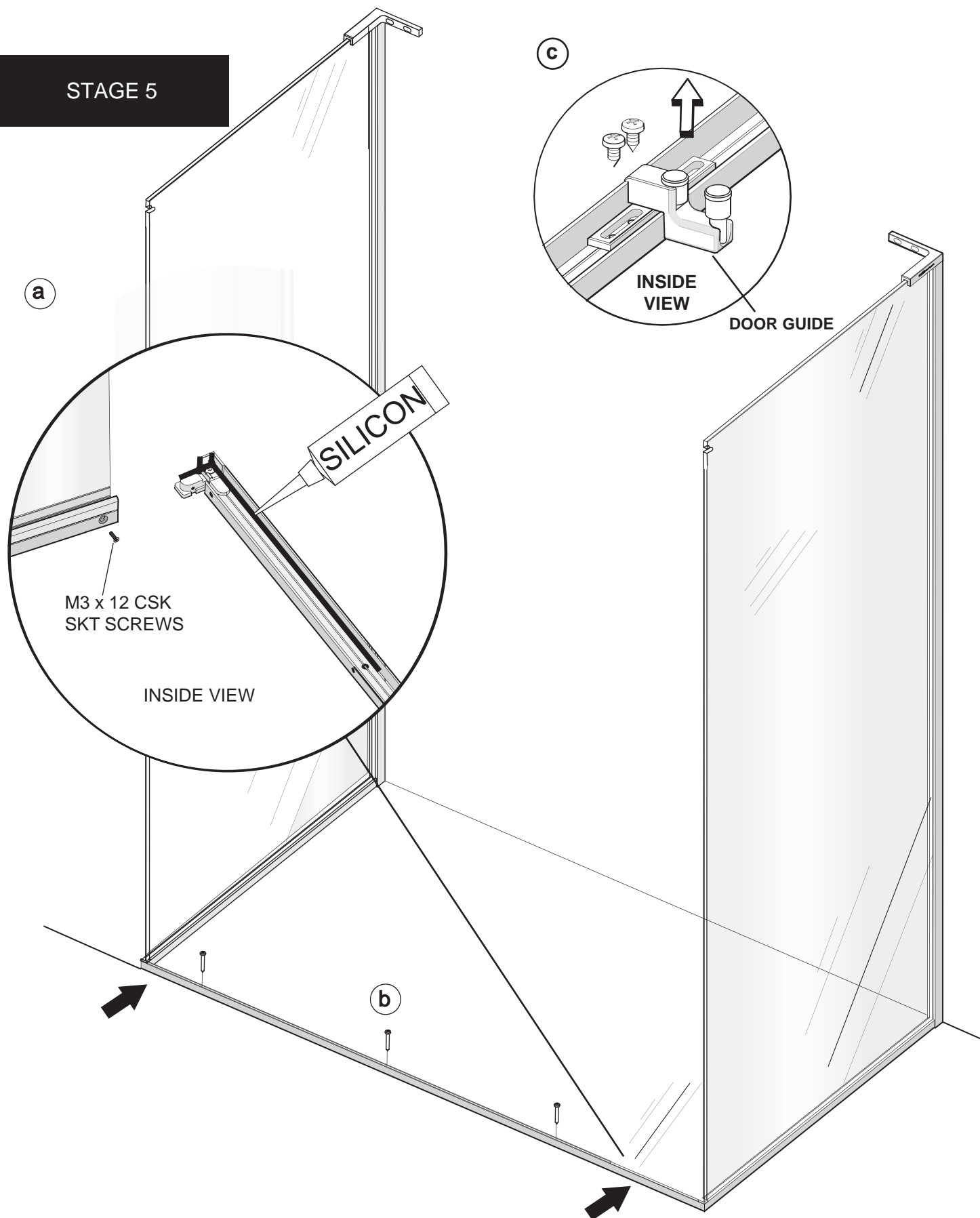
**d. Fitting of Side panel top bracket:** Fit the rubber ' U ' shaped gasket onto the top edge of the glass with the grooved face of the gasket facing outwards. Fit the wall bracket over the glass and onto the top of the wall mount.

**e.** Mark the centre of the slotted holes in the wall bracket onto the wall. Remove the wall bracket and drill and fix the wall plugs.

**d.** Refit the wall bracket. Clamp the bracket onto the glass by tightening the clamping screws on the inside of the bracket. Fit the clamping screw cover caps into the two unused holes on the inside of the wall bracket. Apply a small spot of silicon in the holes before fitting the caps.

**e.** Fix the bracket to the wall using the No.8 x 50 Pan head screws and fit the bracket screw cover caps

## STAGE 5



### **This stage is describing the final fitting of the front threshold to the side panels**

**a.** Before re-fitting the front threshold to the side panel corner apply a bead of silicon sealant to the inside corners of the threshold corner cap and down the face where the return closure panel fits to the threshold.

Remove the pre-assembled M3 x 12 Csk skt screws and No.6 x 13 Csk self tap screw.

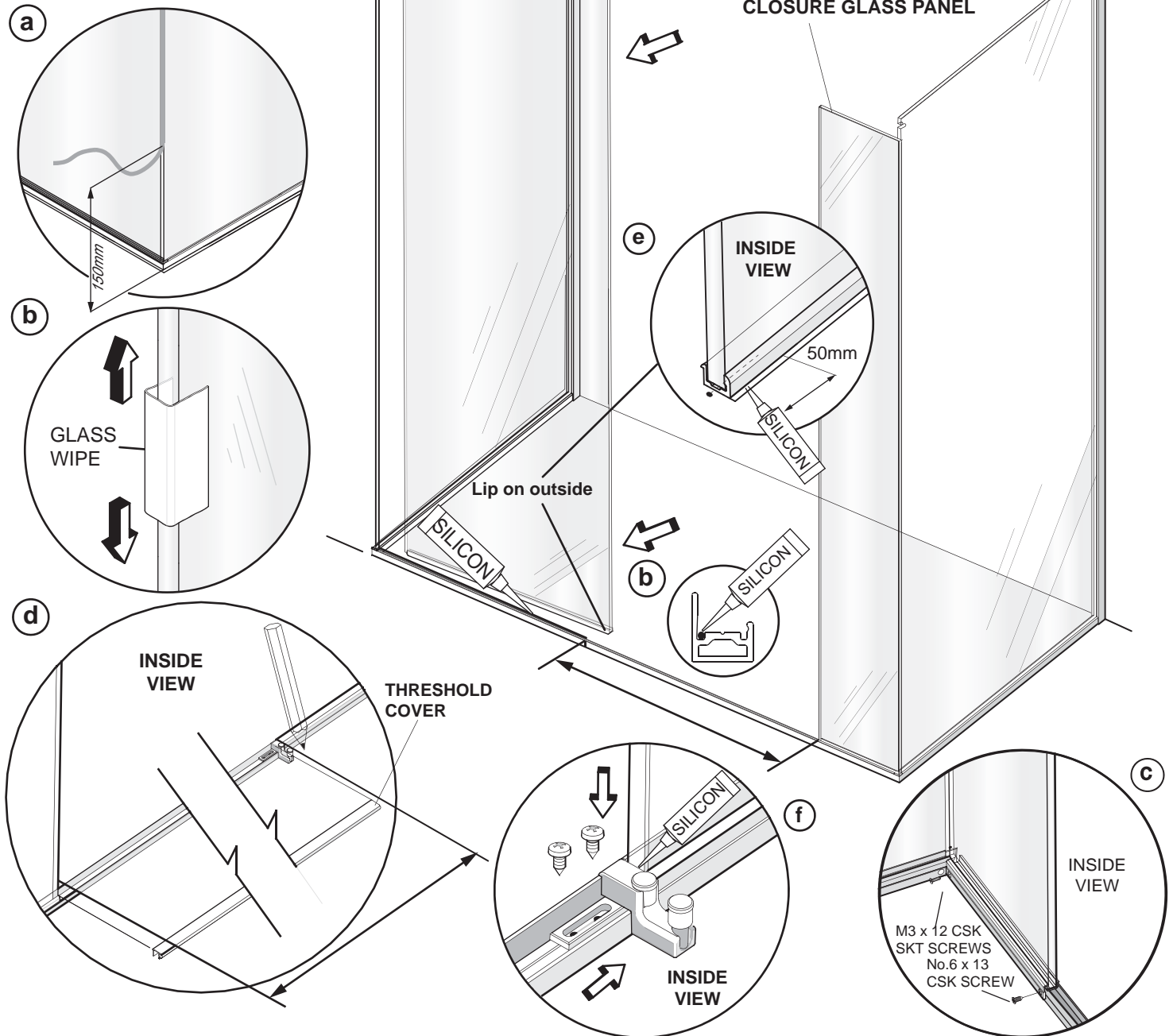
Secure the corner together with the M3 x 12 Csk screws using the allen key supplied. Secure the end of the closure panel frame to the threshold with the No.6 x 13 Csk self tap screw. (Spare screws are supplied in parts kit)

**b** Then secure the front threshold to the shower tray or tiled surface as pre drilled in Stage 3.

**c.** Remove the door guide from the threshold extrusion before fitting the front glass panel.



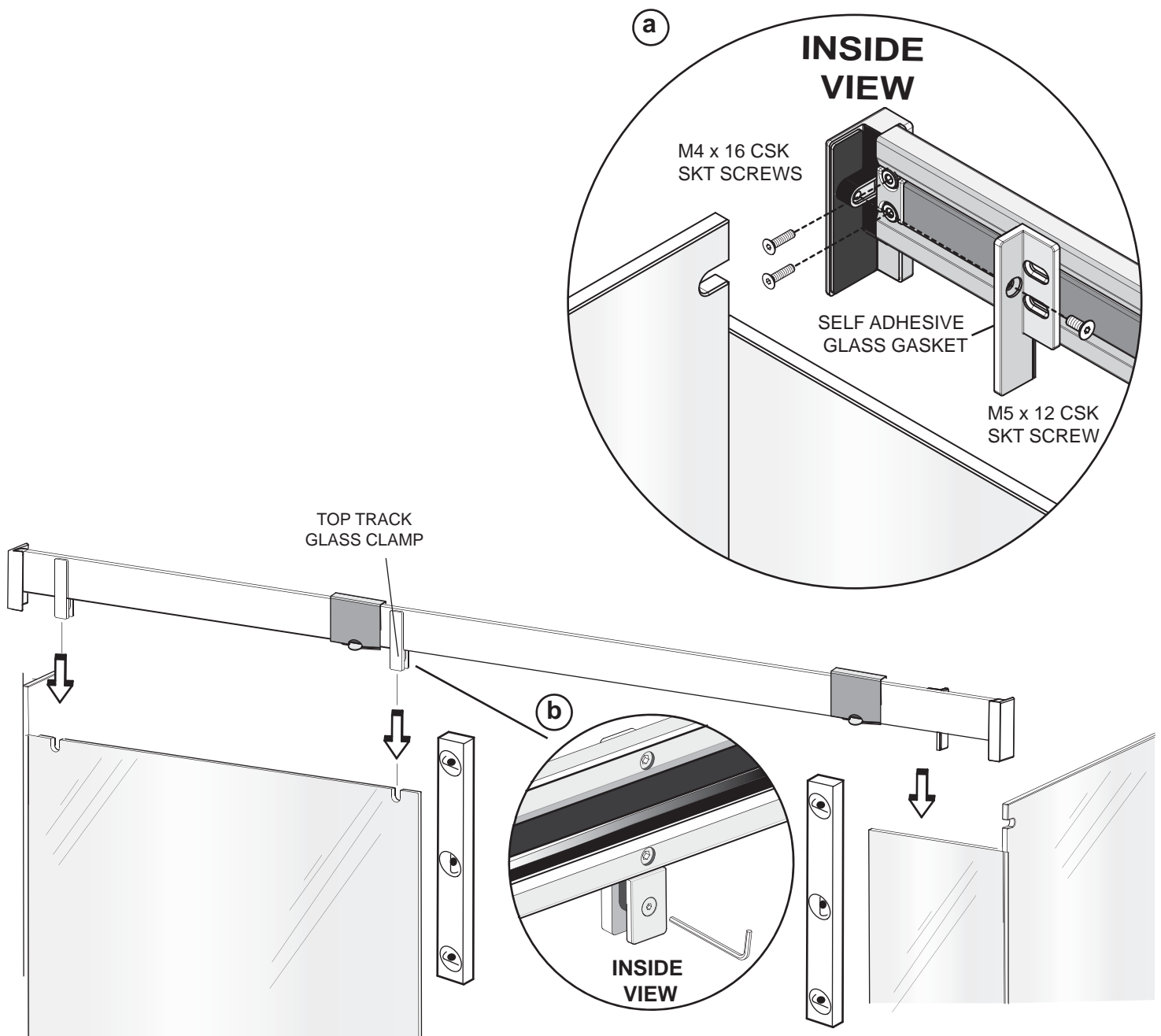
## STAGE 6



### This stage is describing the fitting of the Closure glass panel and Front panel.

- a.** Before fitting the closure glass panel, peel back approximately 150mm of the yellow backing film from the bonding tape that is on the edge of the side panel. Peel the backing film from the bottom upwards to aid removal of the film once front panel is in position.
- b.** Before fitting the closure panel to the side panel, clean the face of the closure panel glass that will be bonded to the side panel using the cleaning wipe supplied. Carefully re-fit the closure glass panel into position ensuring it is fully pushed into the corner cap of the threshold.
- Final bonding of corner joint between panels:** Carefully move the closure panel away from the Side panel at the top, maximum gap 15mm, to create a 'V' shaped gap between the front panel and side panel. Slowly remove the backing film from the removed edge working upwards aligning the glass face and edge. Press the glass together as the backing film is removed, when 300mm from the top remove all the backing film and press firmly together. Allow 12 hours for the bond to cure fully before showering.
- c.** Secure the end of the closure panel frame to the threshold with the No.6 x 13 Csk self tap screw. (Spare screws are supplied in parts kit) Secure the second fixing in the corner with the M3 x 12 Csk screw using the allen key supplied
- d.** As a guide place the threshold cover extrusion between the door guide and closure glass panel. Mark on the threshold extrusion using a strip of masking tape or non permanent marker the distance to the outside edge of the door guide. This will indicate the finished position of the front panel.
- e. IMPORTANT -** Before fitting the front panel, apply a 50mm long bead of Silicon sealant central to the underside of the front panel extrusion and in the front inside corner of the threshold extrusion where the front panel is to be fitted. Fit the front panel with the glass cut that out that is closer to the glass edge towards the door entrance. Repeat stages a + b to bond the front panel.
- f.** Refit the door guide to the threshold extrusion fitting one leg of the door guide underneath the front glass panel. Before securing the door guide apply a small bead of silicon to the end face of the front glass panel where it meets the door guide. Secure the door guide with the No.8 x 9.5 Pan head screws.

## STAGE 7



**This stage is describing the fitting of the Top Track.**

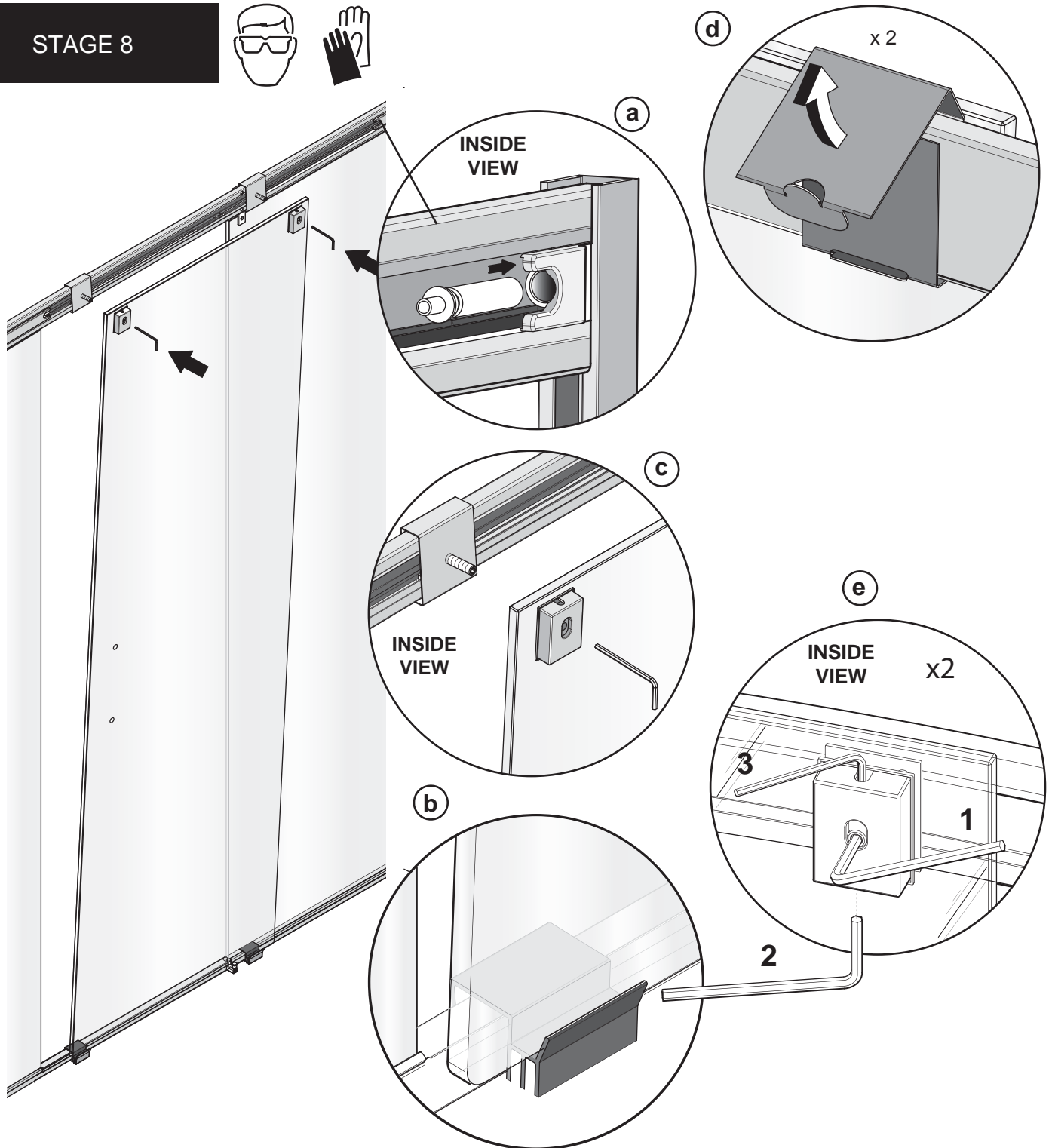
**a.** Remove the corner bracket back plate from the pre-assembled corner bracket at the end of the top track by removing the M4 x16 CSK SKT screw and the M5 x 12 CSK SKT screw using the allen key provided. Retain components for re-assembly to top track when in position.

**b.** Loosen the fixing screw on the inside of the top track glass clamp before fitting the top track. Carefully fit the top track top track glass clamps into the front panel glass cut outs. Check that each end of the top track are flush with the inside face of the side panel glass.

**a.** Before re-fitting the corner bracket back plate remove the film liner from the self adhesive gaskets on the inside of the bracket plate. Re-fit the back plate using the M4 x16 CSK SKT screws and the M5 x 12 CSK SKT screw, apply pressure to the from the outside of the corner bracket towards the side panel, whilst gradually tightening all the screws.

**b.** Tighten the top track glass clamp.

## STAGE 8

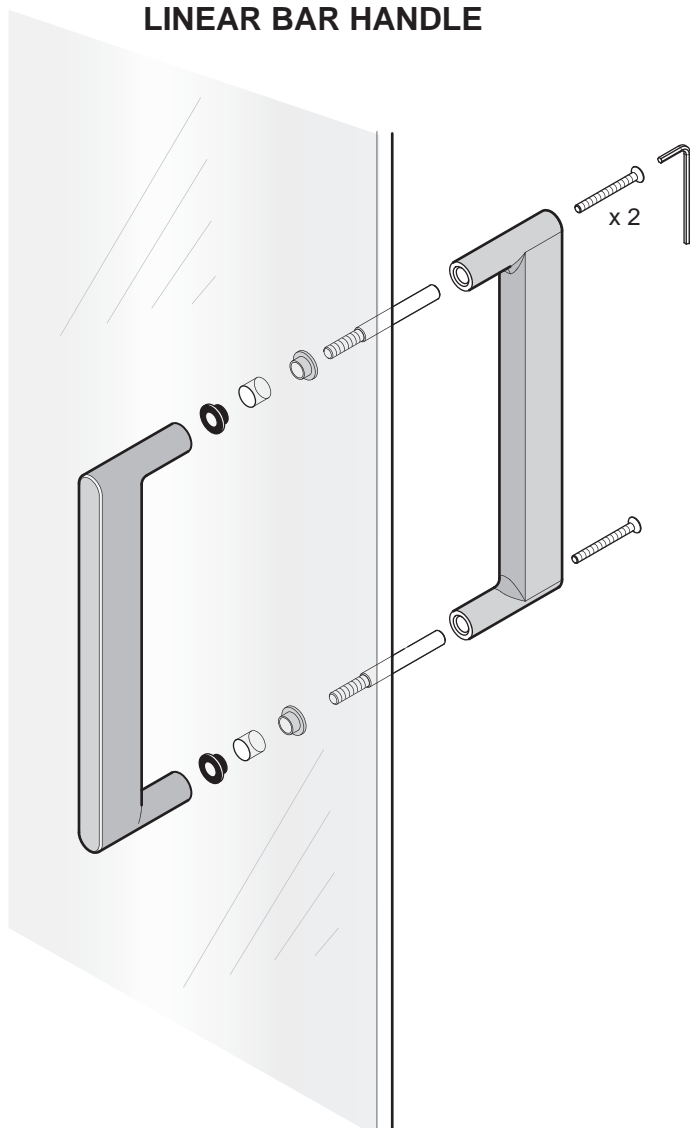


### This stage is describing fitting of the Door Panel.

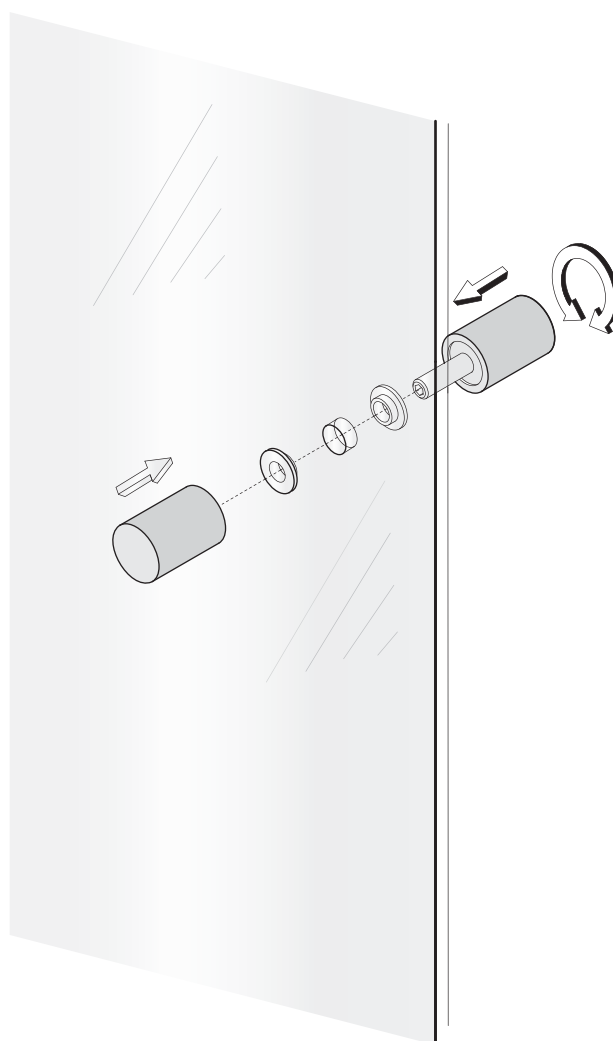
- a.** Fit the top track door dampers into the wall mount brackets at each end of the top track.
- b. Important** - Fit the plastic threshold protectors to the Threshold track at either side of the Door opening.
- c.** Load the door glass firstly onto the threshold protectors and door guide and then carefully guide the door up to the door roller threads and wind them through the door roller blocks fixed to the glass.
- d.** Remove both the cardboard top track door roller guides by pulling the tabs and unfolding them away from the top track.
- e.** Adjust the door panel if required so that it runs parallel to the door opening by adjusting the Roller blocks on the inside of the door. To adjust the door away from the top track rotate the central set screw **C1** clockwise using the 4mm allen Key. To adjust the door to the top track, rotate the central set screw **C1** anti-clockwise. **c.** The door glass can also be raised or lowered by the adjustment screw **C2** in the underside of the roller block using the 4mm allen key supplied. Rotate clockwise to lower the door, rotate anti-clockwise to raise the door. **c.** Lock the adjustment with the set screw **C3** in the top of the roller block using the 2.5mm allen key supplied.

## STAGE 9

### LINEAR BAR HANDLE



### SINGLE STRAIGHT HANDLE



#### This stage is describing the fitting of the Door Handle

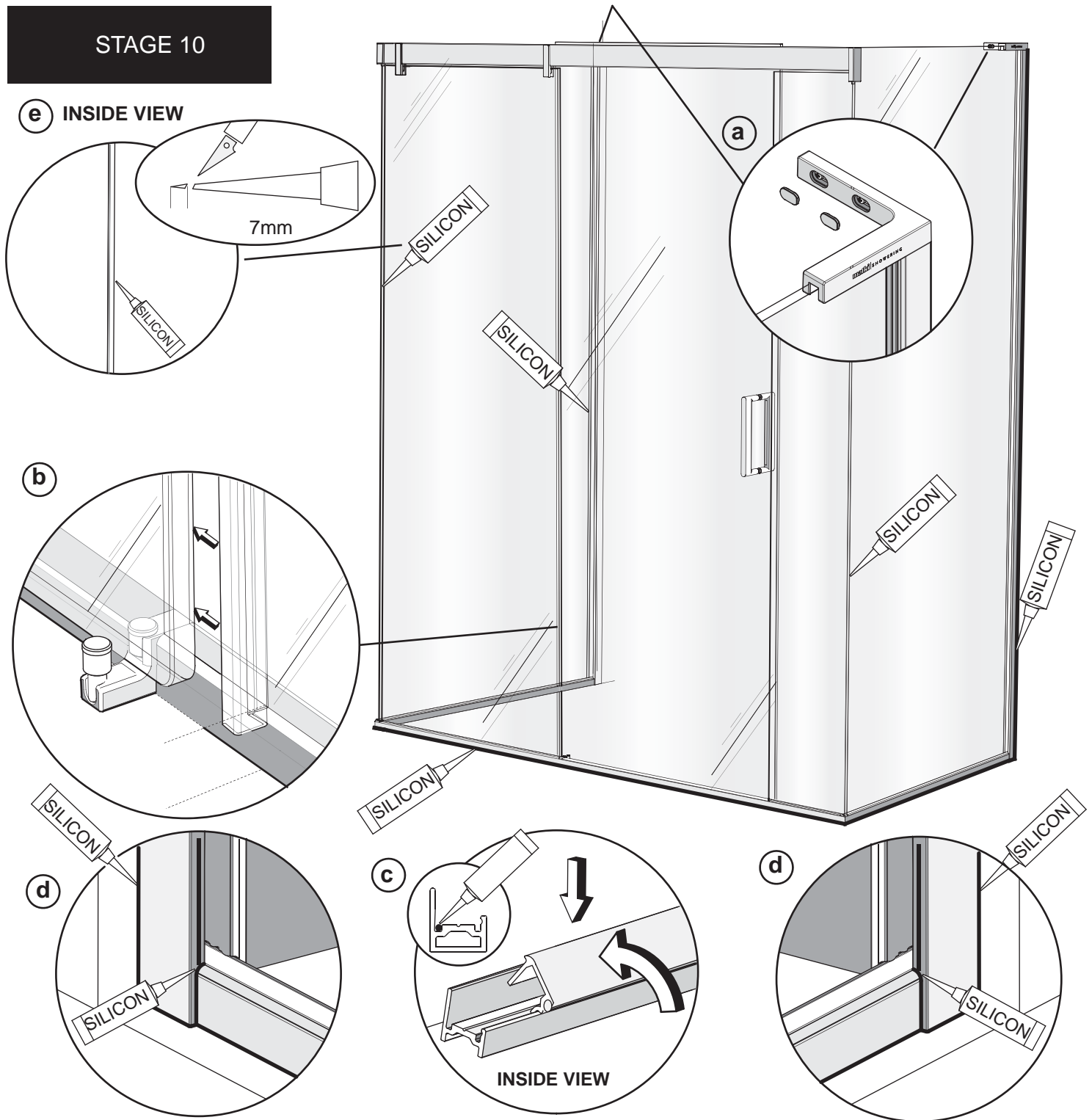
##### Linear Bar handle

Disassemble the handle by unscrewing the 2 x M4 x 40 Csk socket screws and removing the back handle. Place the 4 x black glass washers either side of the 2 holes in the Door glass. Carefully fit the front Handle and Handle connectors through the 2 holes in the Door glass. Fit the back Handle onto the Handle connectors and fix into position by fitting the 2 x M4 x 40 Csk socket screws.

##### Single Straight handle

Fit the Door handles to the glass ensuring that the white handle washers are placed in the hole in the glass between the handles and the door glass, screw together until tight.

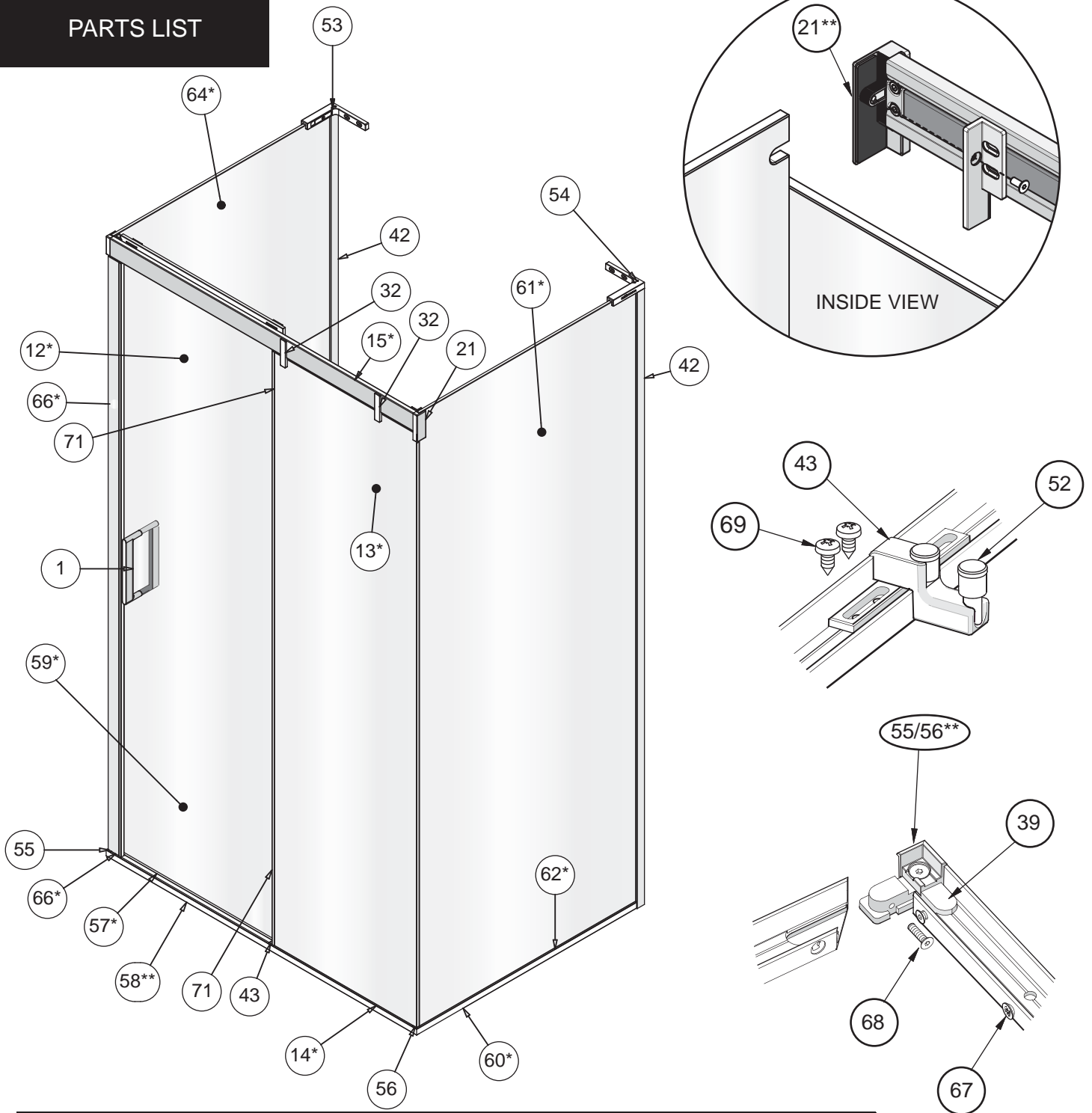
## STAGE 10



### This stage is describing fitting the Caps, Seals and Silicon Sealant

- a.** Fit the 2 x wall bracket screw covers into the adjustment slots in the side panel wall bracket.
- b.** Fit the door vertical seal to the edge of the door glass behind the front glass panel. The seal should fit down to the inside top face of the front panel frame when the door is in the closed position. Additional vertical seals are supplied that can also be fitted to the front panel glass and closure panel glass should they be required, subject to position of shower head and use.
- c.** Apply a bead of silicon along the inside length of the threshold in the recess at the front of the track. Clip the threshold cover into the threshold extrusion by hooking the inside leg down first then pushing the front until the cover snaps into position. The threshold cover should fit tightly between the closure panel glass and the door guide.
- d.** Apply a thin bead of silicon along the bottom edge of both the wall mounts and all the way up the outside of both the wall mount extrusions between the wall mounts and the tiles. Apply a thin bead all the way along the threshold between the extrusion and the finished floor surface/tray. Continue around the joint where the threshold joins the wall mounts. Masking tape can be used to achieve a tidy edge to the sealant. Remove the masking tape immediately and allow the silicon to cure for 24 hours before using the shower.
- e.** Cut 7mm off the end of the spare Silicon sealant nozzle provided in the kit of parts. Using this nozzle apply a very thin bead of silicon along the full length of the inside joint where the both Side panels and front panel meet.

# PARTS LIST



WALL MOUNT & TOP BRACKET PARTS KIT	6178 AF	
No.8 X 32 PAN HEAD SELF TAP SCREW	1471 A SILVER	5
WALL PLUG	1818 AF	7
WALL BRACKET SCREW CAPS	5579 A SILVER	2
No.8 X 50 PAN HEAD SELF TAP SCREW	1492 A SILVER	2

EPST PARTS KIT	6177 AF	
No.8 X 25 PAN HEAD SELF TAP SCREW	1456 A SILVER	5
WALL PLUG	1818 AF	5
DAMPER	1340 AF	2
2.5mm ALLEN KEY	1168 AF	1
4mm ALLEN KEY	1166 AF	1
2mm ALLEN KEY	1286 AF	1
M3 x 12 CSK SOCKET HEAD CAP SCREW	1353 A SILVER	4
No. 6 X 13 CSK HEAD SELF TAP SCREW	1431 A SILVER	2



# PARTS LIST

Parts List			
ITEM	DESCRIPTION	PART No.	QTY
1	SLIM BAR HANDLE	6185 AF	1
2	ROLLER BLOCK BACK PLATE	5152 A SILVER	2
3	ROLLER BLOCK FRONT PLATE	5150 A SILVER	2
4	ROLLER BLOCK(10mm)	6666 AF	2
5	CSK SKT SCREW	1404 A SILVER	6
6	M5 x 10 SKT SET	1467 A SILVER	2
7	SKT CAP SCREW	1372 A SILVER	2
8	ROLLER BLOCK GASKET	5545 BLACK	2
9	EAUZ MODIFIED SOCK SET + ST.ST BEARING	8580 AF	2
10	475 ROLLER BLOCK GASKET(10mm)	5543 BLACK	2
11	WASHER OD11.43 ID6.10 X 0.38	1307 AF	2
12*	DOOR PANEL 1200 -1475	7980 M CLEAR/PLAIN	1
12*	DOOR PANEL 1500 - 1800	7981 M CLEAR/PLAIN	1
13*	THREE SIDED FIXED PANEL 1200 - 1475	7898 M CLEAR/PLAIN	1
13*	THREE SIDED FIXED PANEL 1500 - 1800	7899 M CLEAR/PLAIN	1
14*	EPST FIXED PANEL HORIZONTAL 1200 - 1475	6323 A SILVER	1
14*	EPST FIXED PANEL HORIZONTAL 1500 - 1800	6324 A SILVER	1
15*	EPST TOP TRACK 1200/1225/1250/1275	6298/6299/6300/6301 A SILVER	1
15*	EPST TOP TRACK 1300/1325/1350/1375	6302/6303/6304/6305 A SILVER	1
15*	EPST TOP TRACK 1400/1425/1450/1475	6306/6307/6308/6309 A SILVER	1
15*	EPST TOP TRACK 1500/1525/1550/1575	6310/6311/6312/6313 A SILVER	1
15*	EPST TOP TRACK 1600/1625/1650/1675	6314/6315/6316/6317 A SILVER	1
15*	EPST TOP TRACK 1700/1725/1750/1775/1800	6318/6319/6320/6321/6322 A SILVER	1
16*	BOTTOM TRACK GUIDE + INFILL 1200-1475 MODEL	8660 A SILVER + 6668 WHITE	2
16*	BOTTOM TRACK GUIDE + INFILL 1500-1800 MODEL	8661 A SILVER + 6669 WHITE	1
17*	TOP TRACK INFIL MODEL 1200 - 1475	4603 BLACK	2
17*	TOP TRACK INFIL MODEL 1500 - 1800	4601 BLACK	1
18	BEARING GUIDE INSERT	5902 AF	4
19	TOP TRACK INFIL STOP	5772 BLACK	4
21**	TOP TRACK CORNER BRACKET ASSY LH CORNER	7326 A SILVER	1
21**	TOP TRACK CORNER BRACKET ASSY RH CORNER	7327 A SILVER	1
29	PTS 6 X 6 STAINLESS SPACER	1896 AF	4
30	M5 x 45 SKT CAP SCREW	DIN 912 - M5 x 45	4
31	M5 x 40 SKT CAP SCREW	1250 A SILVER	2
32	FIXED PANEL GLASS CLAMP FRONT	5761 A SILVER	2
33	FIXED PANEL GLASS CLAMP BACK	5762 A SILVER	2
34	FIXED PANEL GLASS BUSH	5763 BLACK	2
35	FIXED PANEL BACK PLATE GASKET	4584 AF	4
36	FIXED PANEL FRONT CLAMP GASKET	4585 AF	2
37	M4 x 12 CSK SKT	1517 A SILVER	2
38	M4x10SKT CAP SCREW	1258 A SILVER	4
39	LOWER HORIZONTAL CORNER BRACKET	5767 A SILVER	2
40	WALL MOUNT EXTRUSION STOP	6049 A SILVER	2
41	LOWER HORIZONTAL FIXING BRACKET	5773 A SILVER	2
42	SLIDER SIDE PANEL WALL MOUNT	5726 ASSEMBLY	2
43	GUIDE BLOCK	5768 A SILVER	1
44	GUIDE BLOCK PLATE	5769 A SILVER	1
45	GUIDE ARM	5770 AF	1
46	CSK SKT SCREW	1517 A SILVER	1
47	PTFE GUIDE	6989 AF	1
48	M3 x 16 SKT CSK SCREW	1354 A SILVER	1
49	GUIDE SPRING	1843 AF	1
50	WASHER OD7.1 ID3.1 X 0.8	CS 0413758	1
51	ROO GUIDE SPACER (0424125)	CS 0150939	1
52	INNER PTFE GUIDE	6990 AF	1
53	UNIVERSAL L BRACKET	7291 AF	1
54	UNIVERSAL L BRACKET	7291 AF	1
55	RH INLINE CORNER CAP	6068 A SILVER	1
56	LH INLINE CORNER CAP	6044 A SILVER	1
57*	THRESHOLD COVER 1200 - 1475	5749 A SILVER	1
57*	THRESHOLD COVER 1500 - 1800	5750 A SILVER	1
58**	LH FRONT LOWER HORIZONTAL 1200/1225/1250/1275	6325/6326/6327/6328 A SILVER	1
58**	RH FRONT LOWER HORIZONTAL 1200/1225/1250/1275	6550/6551/6552/6553 A SILVER	1
58**	LH FRONT LOWER HORIZONTAL 1300/1325/1350/1375	6329/6330/6331/6332 A SILVER	1
58**	RH FRONT LOWER HORIZONTAL 1300/1325/1350/1375	6554/6555/6556/6557 A SILVER	1
58**	LH FRONT LOWER HORIZONTAL 1400/1425/1450/1475	6333/6334/6335/6336 A SILVER	1
58**	RH FRONT LOWER HORIZONTAL 1400/1425/1450/1475	6558/6559/6560/6561 A SILVER	1
58**	LH FRONT LOWER HORIZONTAL 1500/1525/1550/1575	6337/6338/6339/6340 A SILVER	1
58**	RH FRONT LOWER HORIZONTAL 1500/1525/1550/1575	6562/6563/6564/6565 A SILVER	1
58**	LH FRONT LOWER HORIZONTAL 1600/1625/1650/1675	6341/6342/6343/6344 A SILVER	1
58**	RH FRONT LOWER HORIZONTAL 1600/1625/1650/1675	6566/6567/6568/6569 A SILVER	1
58**	LH FRONT LOWER HORIZONTAL 1700/1725/1750/1775/1800	6345/6346/6347/6348/6349 A SILVER	1
58**	RH FRONT LOWER HORIZONTAL 1700/1725/1750/1775/1800	6570/6571/6572/6573/6574 A SILVER	1
59*	LH SIDE PANEL LOWER HORIZONTAL MODEL 700/760/800/900/1000	5717/6479/5718/5719/6391 A SILVER	1
60*	RH SIDE PANEL LOWER HORIZONTAL MODEL 700/760/800/900/1000	5739/6480/5740/5741/6392 A SILVER	1
61*	SIDE PANEL 700/760/800/900/1000	7988/7992/7989/7990/7991 M CLEAR/PLAIN	1
62*	SIDE PANEL HORIZONTAL 700/760/800/900/1000	5742/6478/5743/5744/6390 A SILVER	1
63*	CLOSURE FIXED PANEL 1200,1500 / 1225,1525	7984 / 7889 M CLEAR/PLAIN	1
63*	CLOSURE FIXED PANEL 1250,1550 / 1275,1575	7890 / 7891 M CLEAR/PLAIN	1
63*	CLOSURE FIXED PANEL 1300,1600 / 1325,1625	7985 / 7892 M CLEAR/PLAIN	1
63*	CLOSURE FIXED PANEL 1350,1650 / 1375,1675	7893 / 7894 M CLEAR/PLAIN	1
63*	CLOSURE FIXED PANEL 1400,1700 / 1425,1725	7986 / 7895 M CLEAR/PLAIN	1
63*	CLOSURE FIXED PANEL 1450,1750 / 1475,1775 / 1800	7896 / 7897 / 7987 M CLEAR/PLAIN	1
64*	SIDE PANEL 700,800,900	7988/ 7989/ 7990 M CLEAR/PLAIN	1
65*	SIDE PANEL HORIZONTAL 700/800/900	5742/5743/5744 A SILVER	1
66*	CORNER CLOSURE PANEL HORIZONTAL 1200,1500 / 1225,1525	5745 / 5922 A SILVER	4
66*	CORNER CLOSURE PANEL HORIZONTAL 1250,1550 / 1275,1575	5923 / 5924 A SILVER	1
66*	CORNER CLOSURE PANEL HORIZONTAL 1300,1600 / 1325,1625	5746 / 5925 A SILVER	1
66*	CORNER CLOSURE PANEL HORIZONTAL 1350,1650 / 1375,1675	5926 / 5927 A SILVER	1
66*	CORNER CLOSURE PANEL HORIZONTAL 1400,1700 / 1425,1725	5747 / 5928 A SILVER	1
66*	CORNER CLOSURE PANEL HORIZONTAL 1450,1750 / 1475,1775 / 1800	5929 / 5930 / 5748 A SILVER	1
67	M6 x 13 CSK SKT SCREW	1431 A SILVER	1
68	M3 x 12 CSK SKT	1353 A SILVER	4
69	No.8 x 9.5 PANHEAD SCREW	1420 A SILVER	2
70	M4 x 8 SKT CSK SCREW	1499 A SILVER	4
71	FIXED PANEL VERTICAL GASKET	2308 CLEAR	3
72	WALL MOUNT AND HINGE PARTS KIT	6177 AF	1
73	WALL MOUNT & TOP BRACKET PARTS KIT	6178 AF	2
74	M5 x 12 CSK SKT SCREW	1518 A SILVER	2
75	WALL MOUNT EXTRUSION STOP NUT	6085 A SILVER	2
76	SS WALL MOUNT SEAL	2388 CLEAR	2

\* ITEM VARIES DEPENDING ON MODEL

\*\* ITEM VARIES DEPENDING ON MODEL + LH/RH

## MAINTENANCE

### Matki Glass Guard Easy Clean Surface Protection (optional) and General Cleaning Guide

#### Cleaning Instructions

Matki Glass Guard allows water to form minute beads which easily trickle off the surface of the glass. This makes the glass easier to clean - the glass does not need to be cleaned as frequently, but it does require occasional maintenance. As less cleaning is required the use of detergents can be minimised thus helping to protect the environment. The lifespan of the Matki Glass Guard is dependant on the frequency of use of the shower and the degree of water hardness.

The combination of alkaline materials and humidity affects glass in an extremely aggressive way. Do not use bleach, alkaline, acid-based or aggressive and abrasive glass cleaners, detergents or household cleaning products on the glass or frames.

We recommend that glass is washed down with clean water and a soft clean cloth or sponge and dried off with a microfibre cloth.

The special coating is only present on the inside of the glass.

Matki Glass Guard is guaranteed for 2 years provided that the guidelines and cleaning instructions are followed.

Aluminium and Chrome parts should be cleaned with a mild non scratch household cleaner and a soft cloth or sponge.

Do not use acidic-based descaler products or products which are unsuitable for cleaning enamelled surfaces, including abrasive cleaners or cleaners containing bleach or solvents, as the products will effect the anodised framework. Under no circumstances use cleaners with a pH level exceeding 8.

Matki does not recommend the use of 'Leave-on' shower cleaners on Matki Glass Guard Products.

**Water Softeners and Glass Guard** - Certain types of water softeners increase the alkalinity of the water due to a carry-over of Chloride during re-generation which can cause aggressive water spots on both untreated and Glass Guarded glass. If using a water softener we recommend a two-cylinder machine with automatic re-generation instead of a timer.

If a single-cylinder water softener with timer is already installed it is recommended that after each shower excess water is removed from the glass with a squeegee or with a micro-fibre cloth.



Wash down with clean warm water and a soft clean cloth or sponge.



Do not use bleach, alkaline or acid-based, aggressive or abrasive cleaning products.

Flash Bathroom Spray or Cif Bathroom Spray can be used on Matki Products.

Various specialist cleaning and glass dressing products are available from Ritec International Ltd Tel. 020 8344 8210 or [www.ritec.co.uk](http://www.ritec.co.uk). Matki Plc is not connected with Ritec International Ltd in any way and the contact details are supplied for information only. Read manufacturers label before using any cleaning materials.

#### IMPORTANT

Matki Glass Guard is guaranteed for 2 years. It is essential that the cleaning instructions are followed in order to maintain the hydrophobic properties of the glass coating. In the event of the failure to comply in any way with these instructions, any warranty or guarantee will be null and void.

**MATKI PLC, CHURCHWARD ROAD, YATE, BRISTOL, BS37 5PL**  
TELEPHONE:01454 328816 (AFTER SALES) FAX:01454 328821 EMAIL: [techsupport@matki.co.uk](mailto:techsupport@matki.co.uk)

